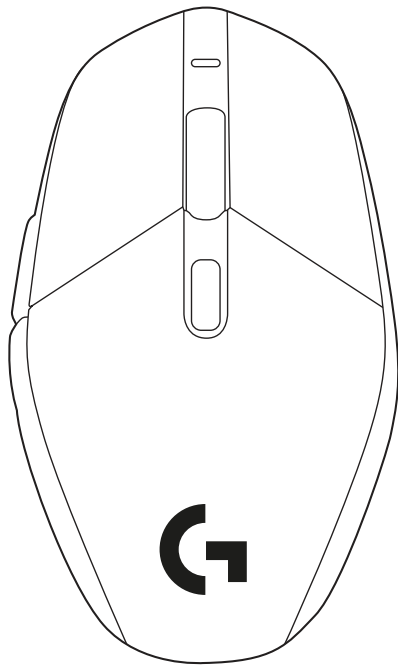


# G303 SHROUD EDITION

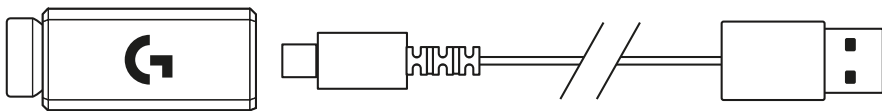
SETUP GUIDE | GUIDE D'INSTALLATION



logitech 

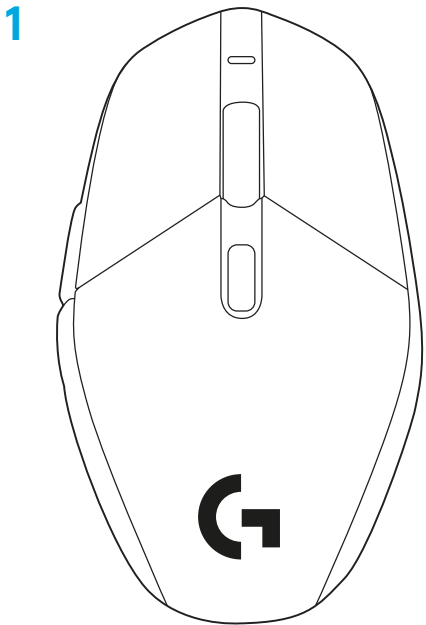


|                     |    |
|---------------------|----|
| ENGLISH . . . . .   | 3  |
| FRANÇAIS . . . . .  | 9  |
| ESPAÑOL . . . . .   | 15 |
| PORTUGUÊS . . . . . | 21 |



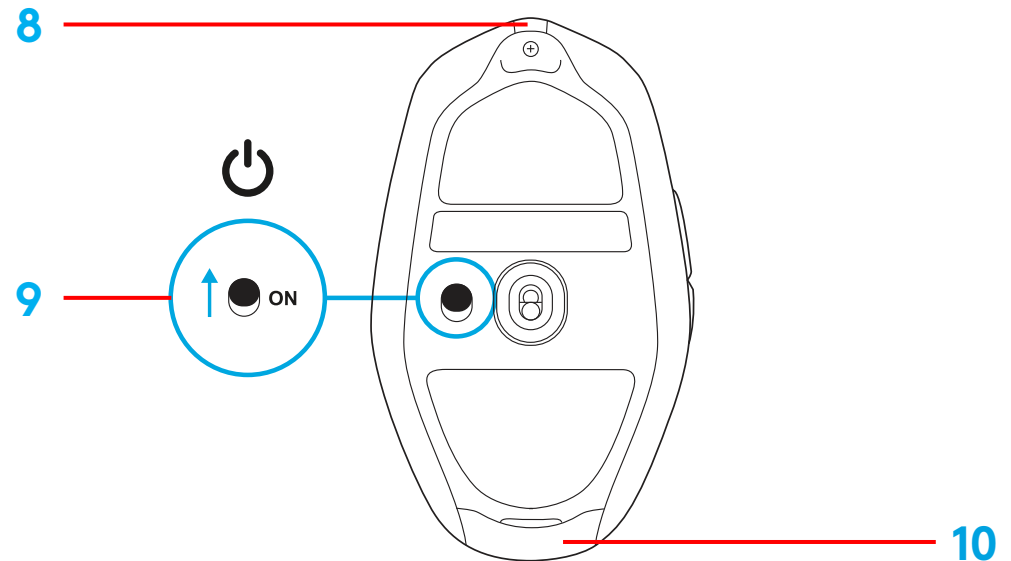
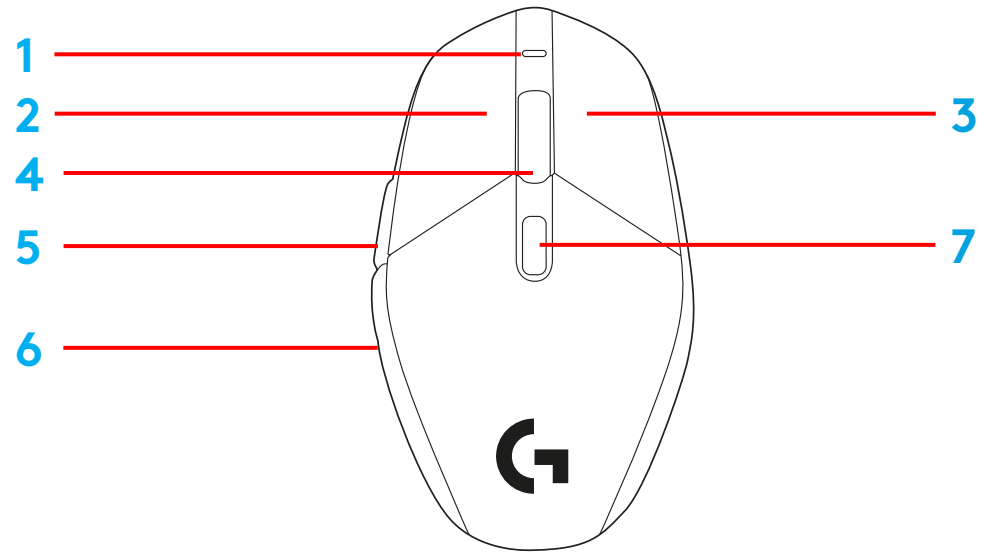
# PACKAGE CONTENTS

- 1 Mouse
- 2 Receiver (installed in extension adapter)
- 3 USB charging and data cable



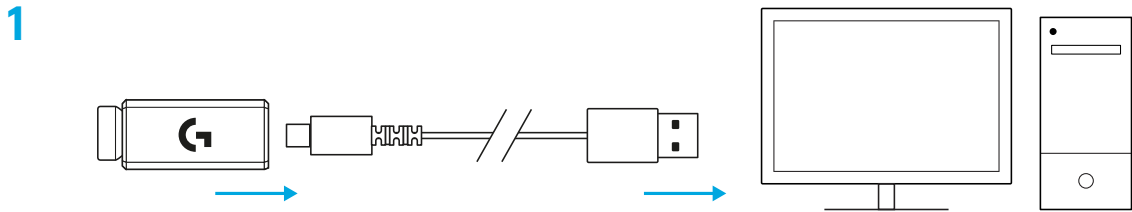
# MOUSE FEATURES

- 1 Power LED
- 2 Left Click
- 3 Right Click
- 4 Middle Click/Scroll
- 5 Browser Forward
- 6 Browser Back
- 7 DPI Cycle
- 8 USB charging/data port
- 9 Power on/off
- 10 Receiver Storage Door

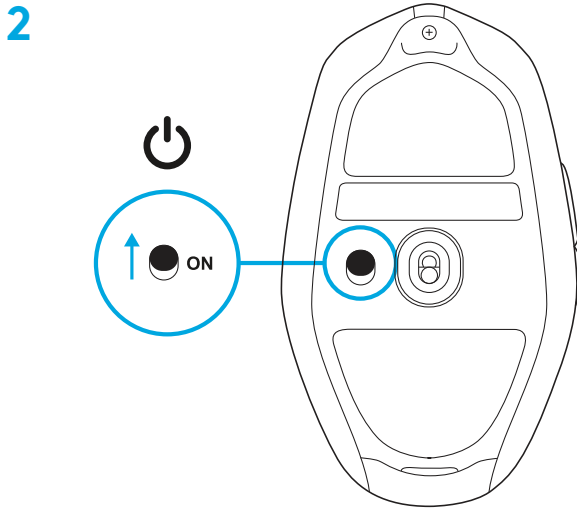


# SETUP

1 Plug charging/data cable into PC, then plug extension adapter and receiver into charging/data cable

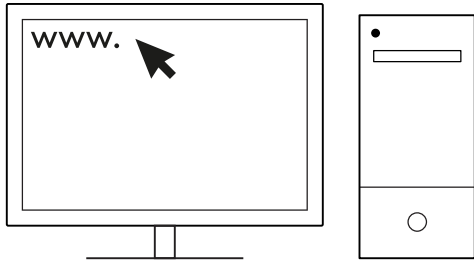


2 Turn on mouse

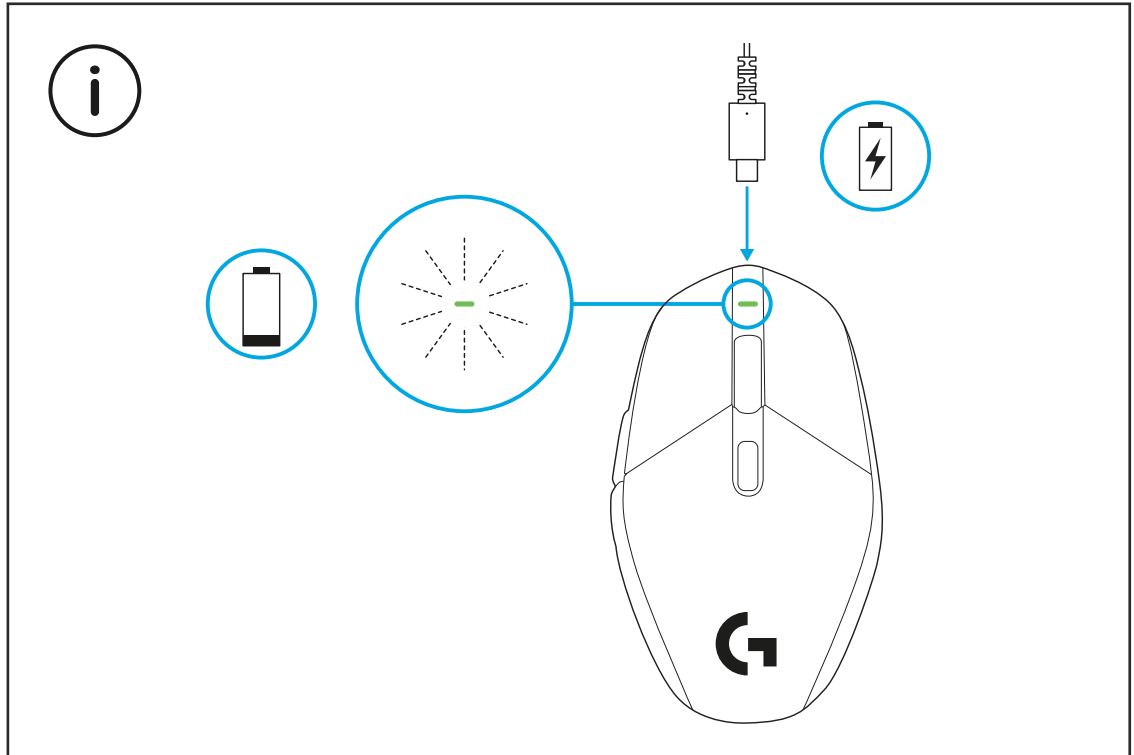


3 To configure mouse settings like DPI, download G HUB software from [logitechG.com/GHUB](http://logitechG.com/GHUB)

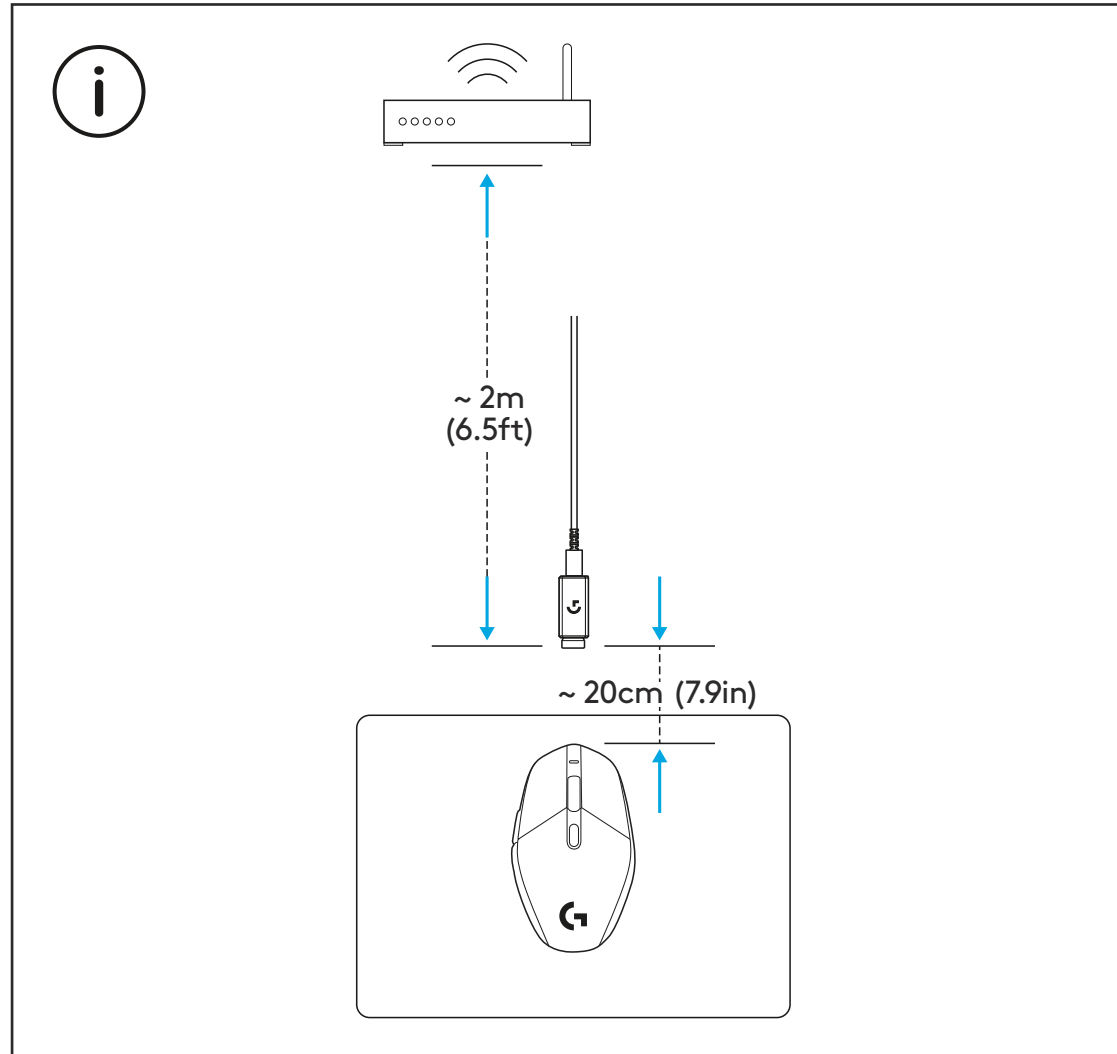
3



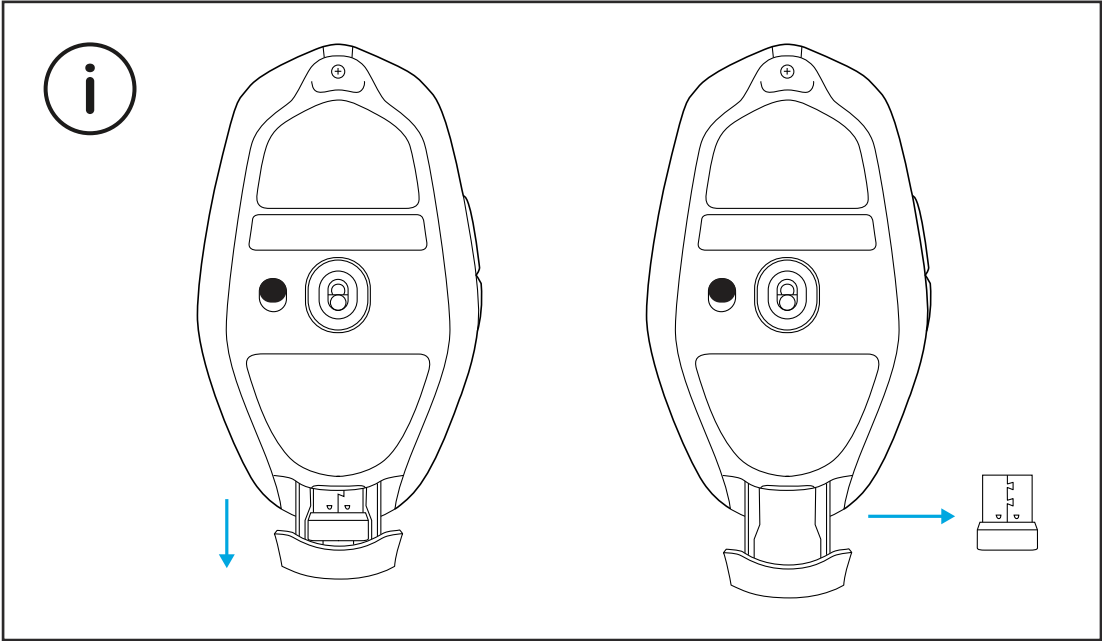
[logitechG.com/ghub](http://logitechG.com/ghub)



For optimal wireless performance, use mouse within 20cm of receiver and greater than 2m from sources of 2.4GHz interference (such as wifi routers).



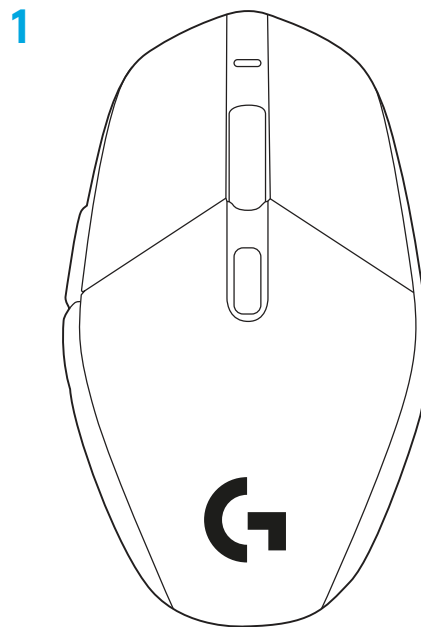
The USB receiver can be stored inside the mouse by opening the storage door.  
This can prevent the receiver from being lost.





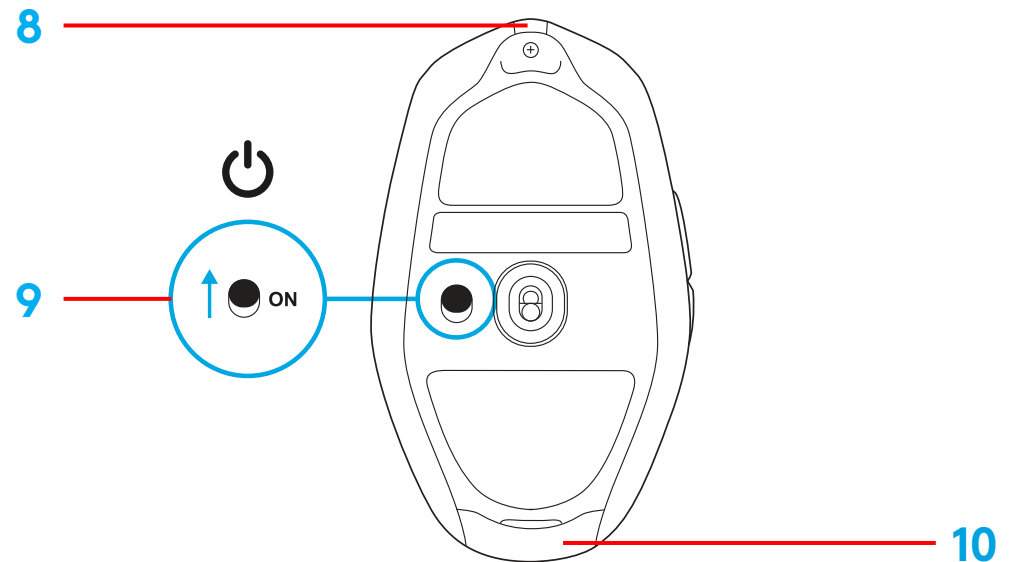
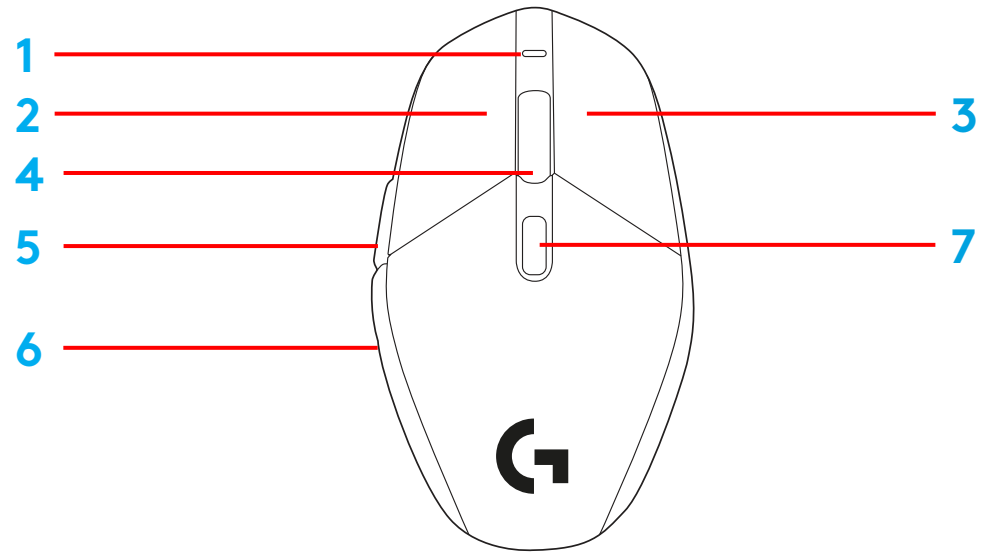
# CONTENU DU COFFRET

- 1 Souris
- 2 Récepteur  
(installé dans l'adaptateur d'extension)
- 3 Câble de charge USB et câble de données



# CARACTÉRISTIQUES DE LA SOURIS

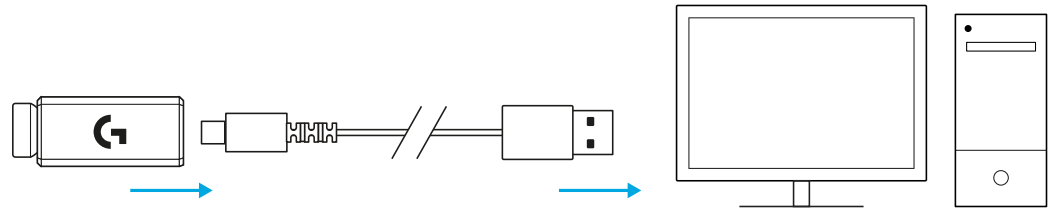
- 1 Témoin d'alimentation
- 2 Clic gauche
- 3 Clic droit
- 4 Clic central/roulette de défilement
- 5 Avancer d'une page dans le navigateur
- 6 Reculer d'une page dans le navigateur
- 7 Cycle PPP
- 8 Port USB de charge/données
- 9 Marche/Arrêt
- 10 Compartiment de rangement du récepteur



# INSTALLATION

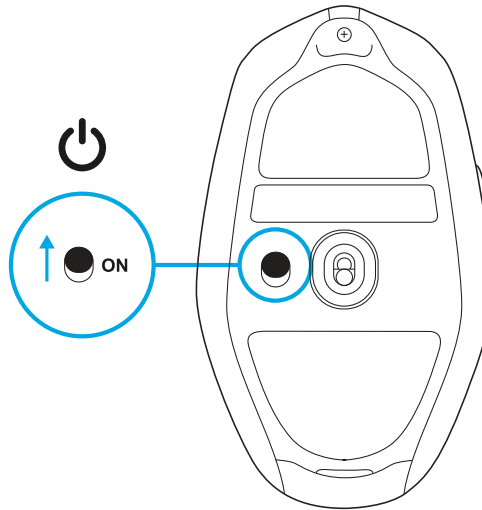
1 Connectez le câble de charge/données sur le PC, puis l'adaptateur d'extension et le récepteur au câble de charge/données

1



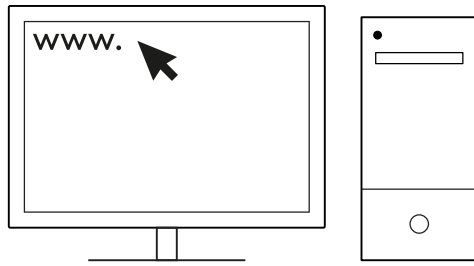
2 Mettez la souris sous tension

2

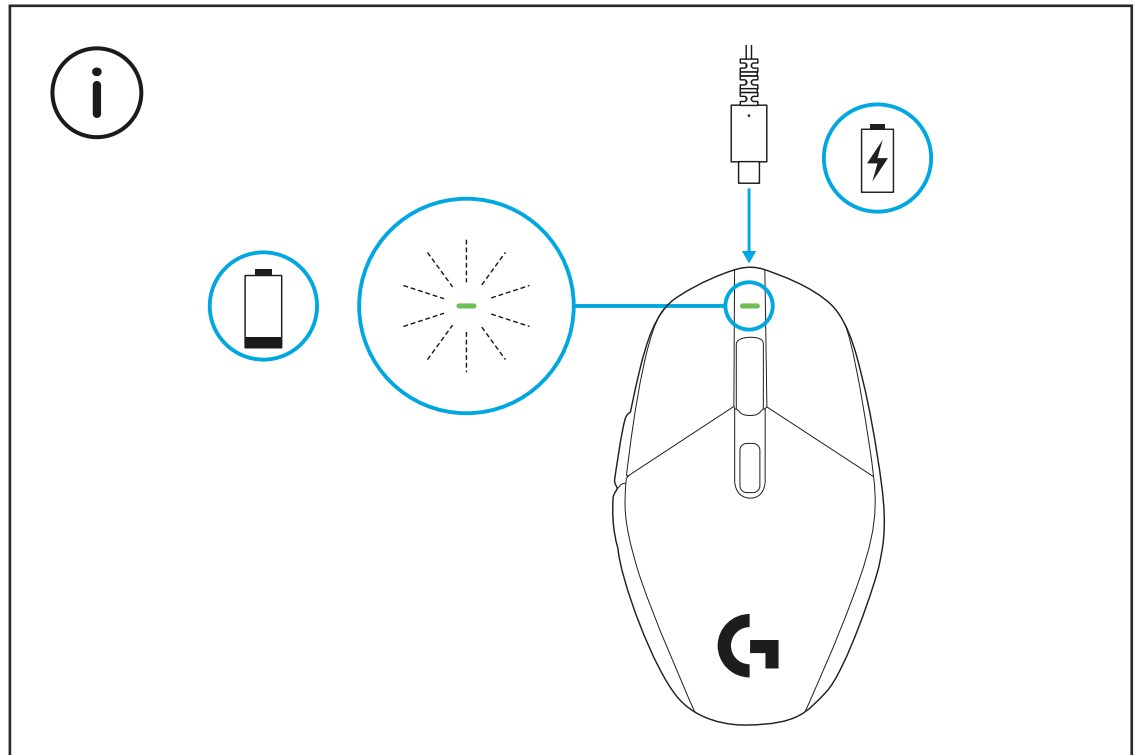


3 Pour configurer les paramètres de la souris, comme sa résolution, téléchargez le logiciel G HUB à l'adresse [logitechG.com/GHUB](http://logitechG.com/GHUB)

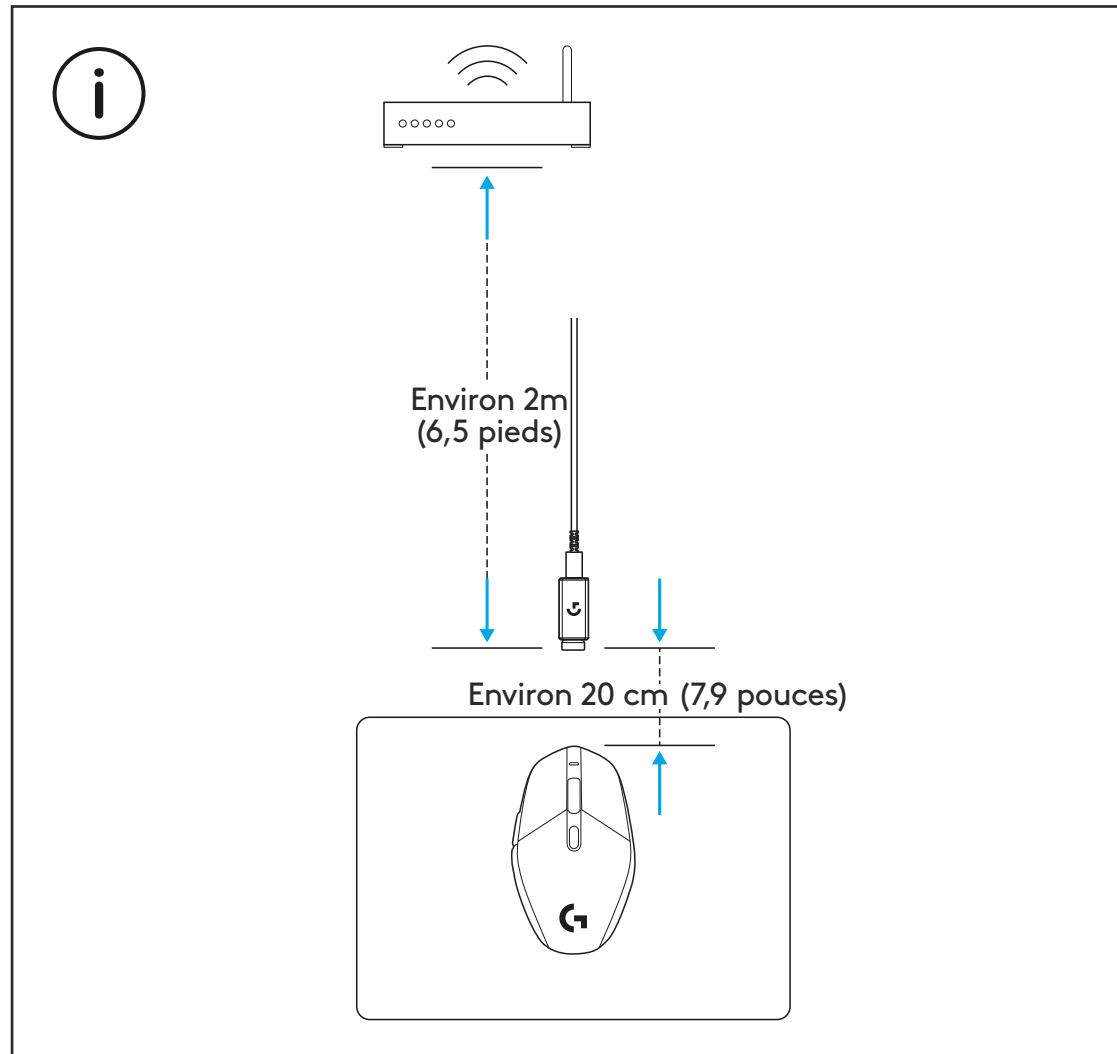
3



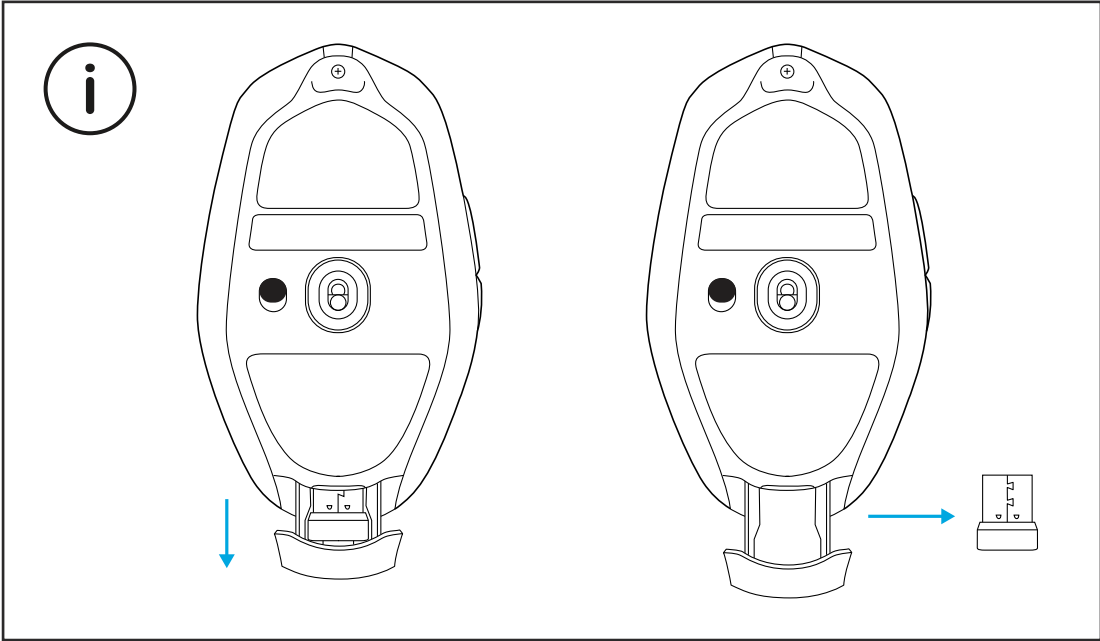
[logitechG.com/ghub](http://logitechG.com/ghub)



Pour bénéficier de performances optimales en mode sans fil, utilisez la souris dans un rayon de 20 cm autour du récepteur et à plus de 2 m des sources d'interférence à 2,4 GHz (notamment les routeurs Wi-Fi).



Le récepteur USB peut être stocké à l'intérieur de la souris en ouvrant le compartiment de stockage. Ainsi, le récepteur n'est pas perdu.



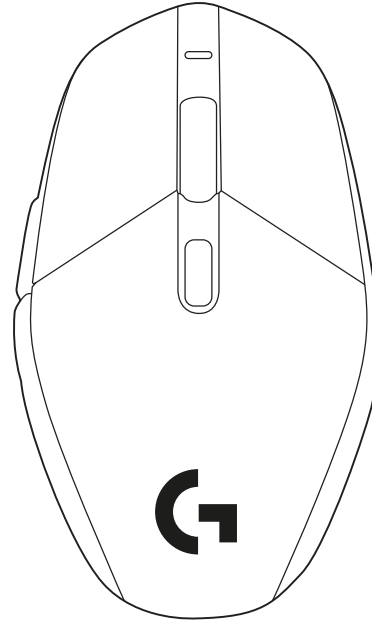
# CONTENIDO DE LA CAJA

1 Mouse

2 Receptor (instalado en adaptador de extensión)

3 Cable de carga y datos USB

1



2

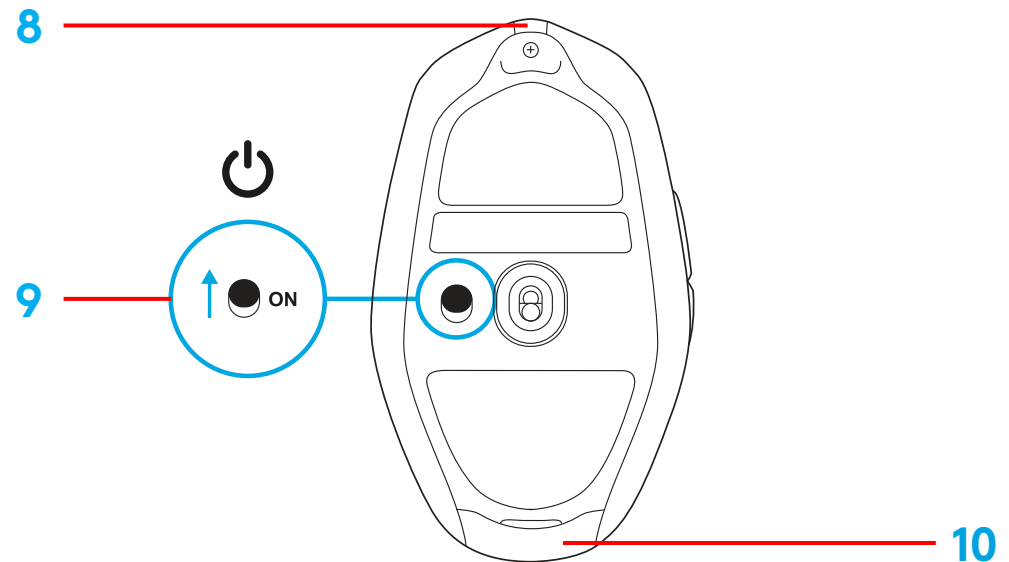
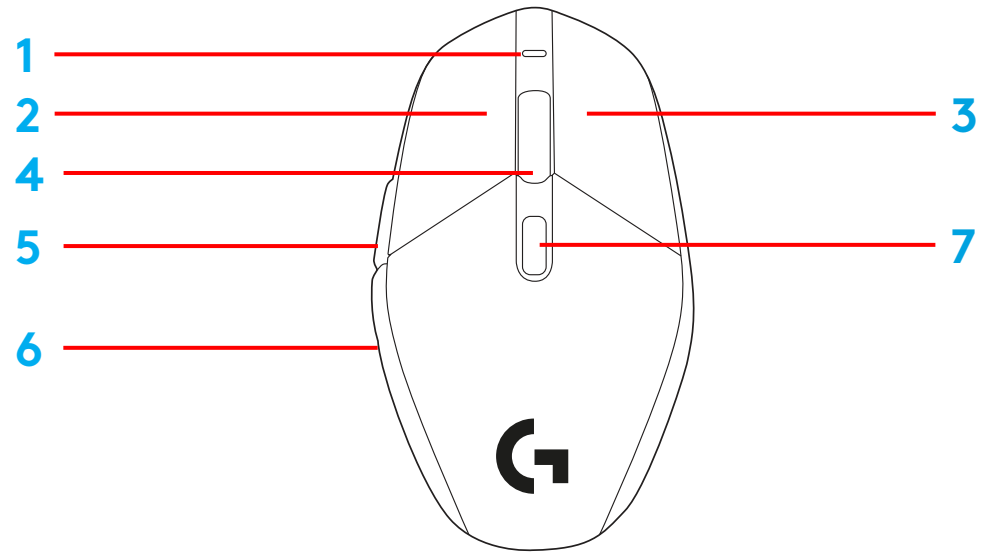


3



# CARACTERÍSTICAS DEL MOUSE

- 1 LED de encendido
- 2 Click de botón izquierdo
- 3 Click de botón derecho
- 4 Click de botón central/Desplazamiento
- 5 Avance en navegador
- 6 Retroceso en navegador
- 7 Ciclo de dpi
- 8 Puerto de carga/datos USB
- 9 Encendido/apagado
- 10 Compartimento de receptor

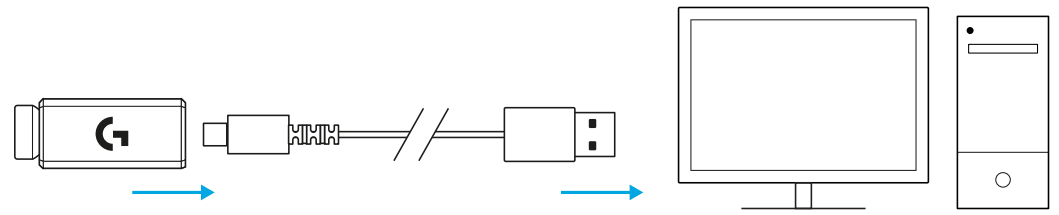




# PROCEDIMIENTO

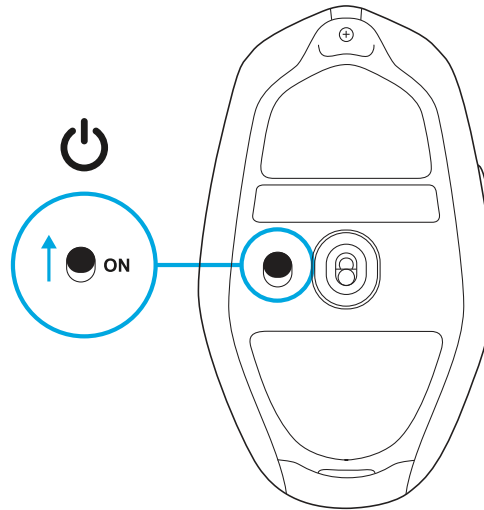
1 Conecta el cable de carga/datos a la PC, luego conecta el adaptador de extensión y el receptor al cable de carga/datos

1



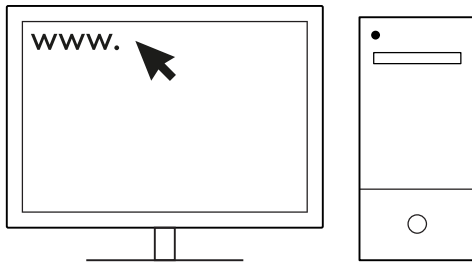
2 Enciende el mouse

2

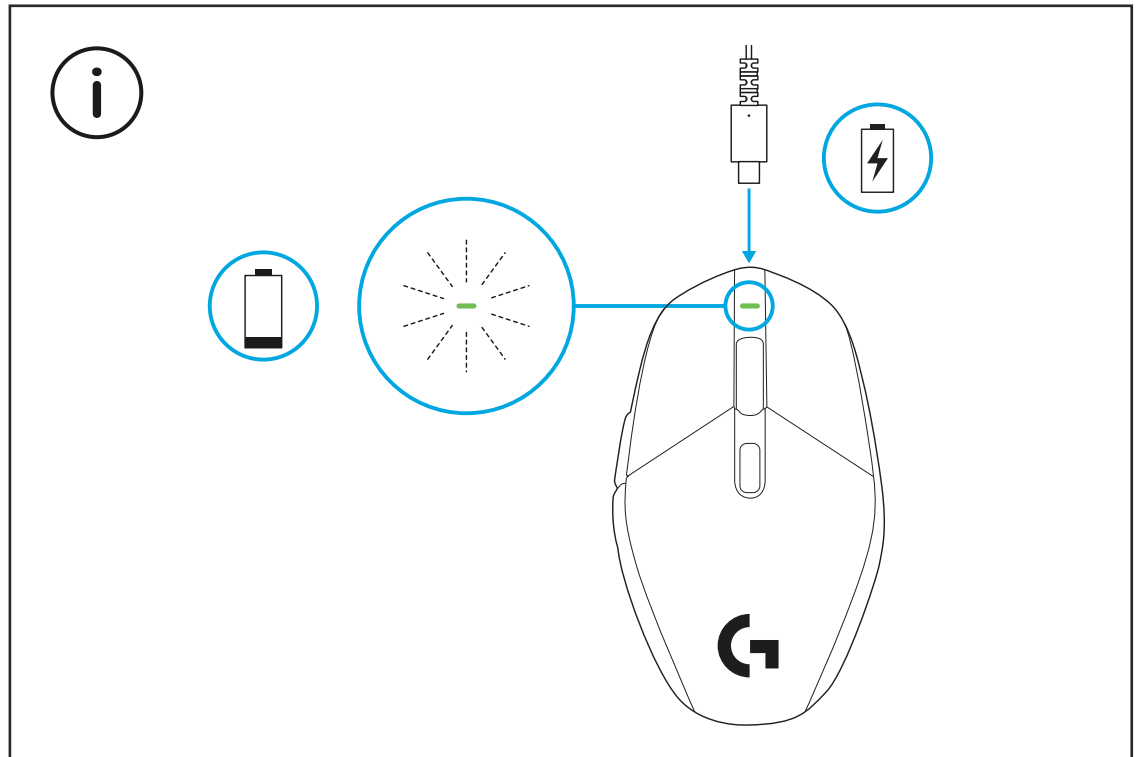


3 Para configurar opciones del mouse como dpi, descarga el software G HUB desde [logitechG.com/GHUB](http://logitechG.com/GHUB)

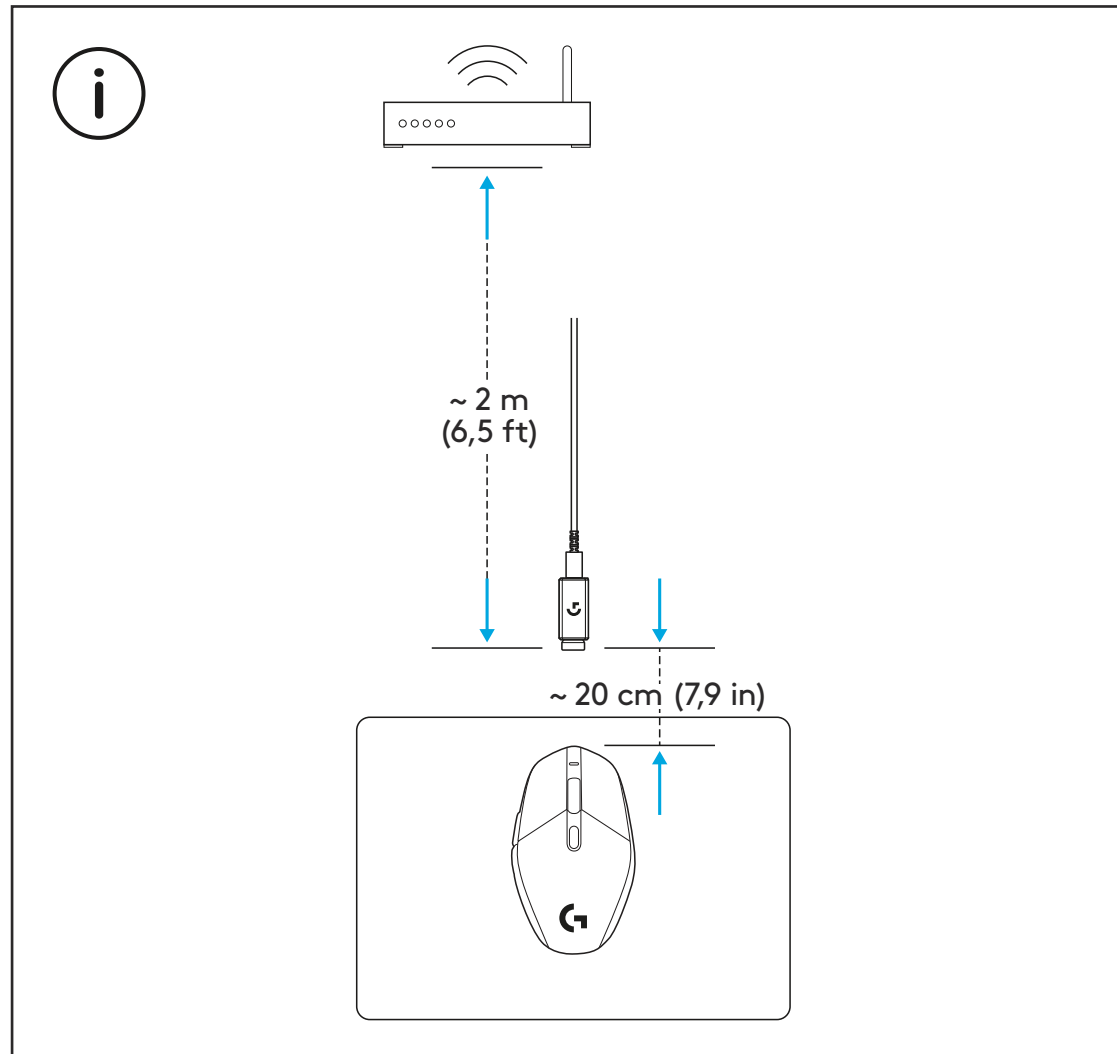
3



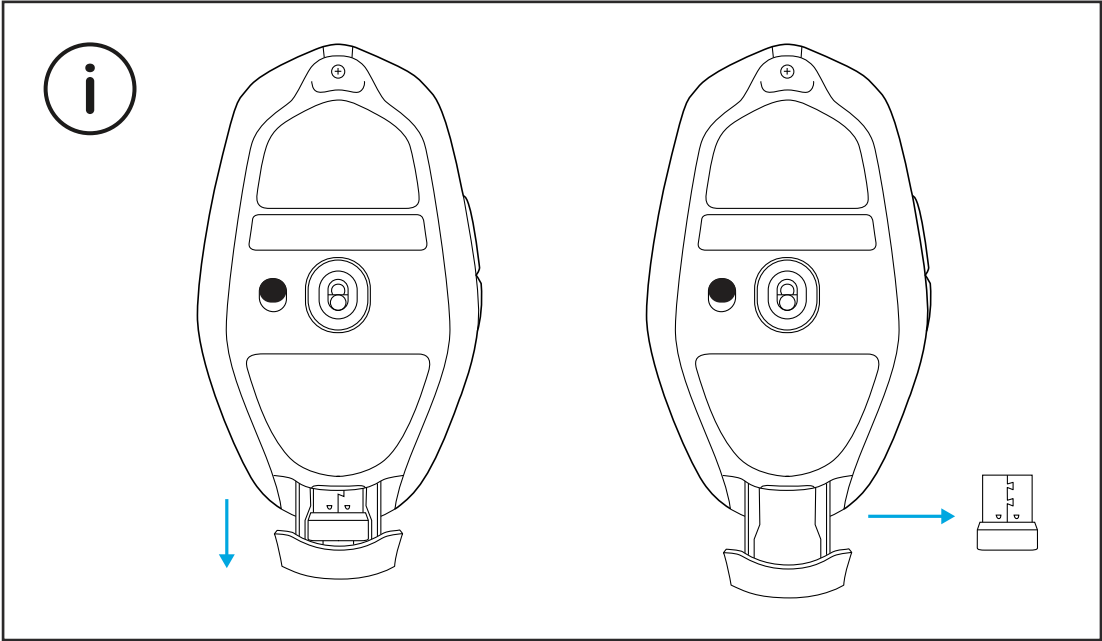
[logitechG.com/ghub](http://logitechG.com/ghub)



Para un óptimo rendimiento inalámbrico, usa el mouse a menos de 20 cm del receptor y a más de 2 metros de fuentes de interferencias de 2,4 GHz (como enrutadores wifi).

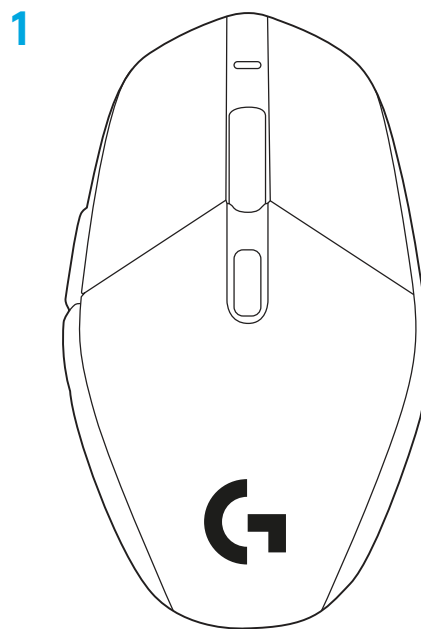


El receptor USB se puede guardar en el interior del mouse, abriendo el compartimento, para evitar que se pierda.



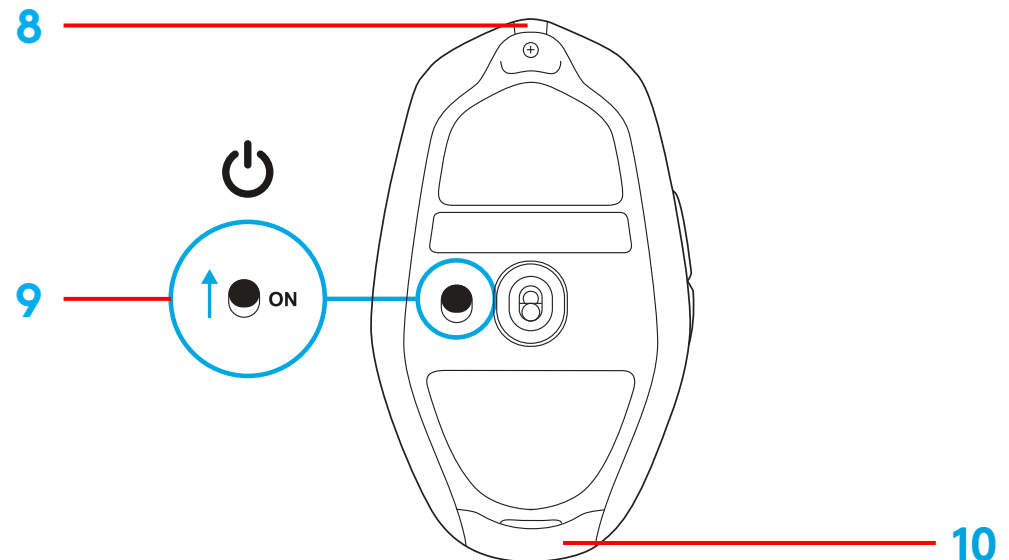
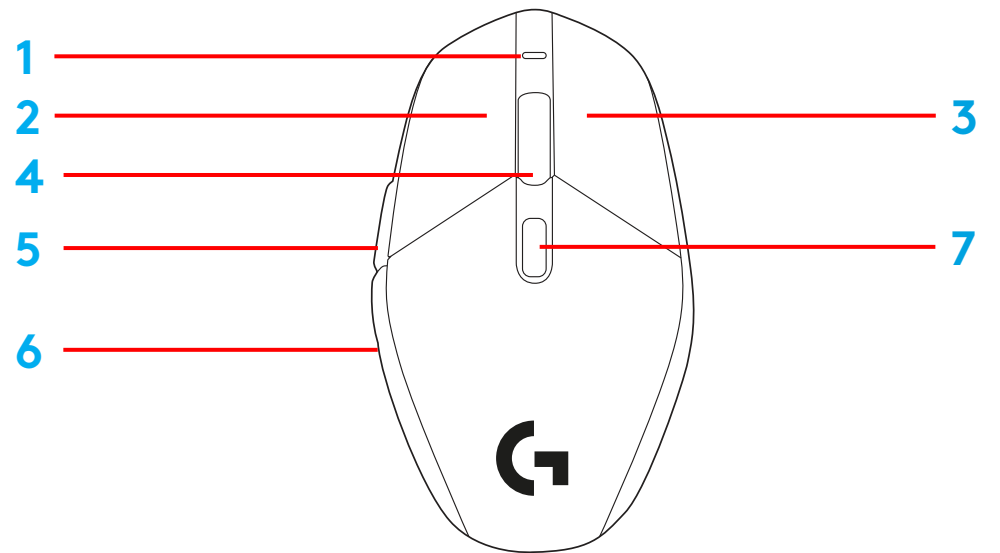
# CONTEÚDO DA EMBALAGEM

- 1 Mouse
- 2 Receptor (instalado no adaptador de extensão)
- 3 Cabo USB de dados e carregamento



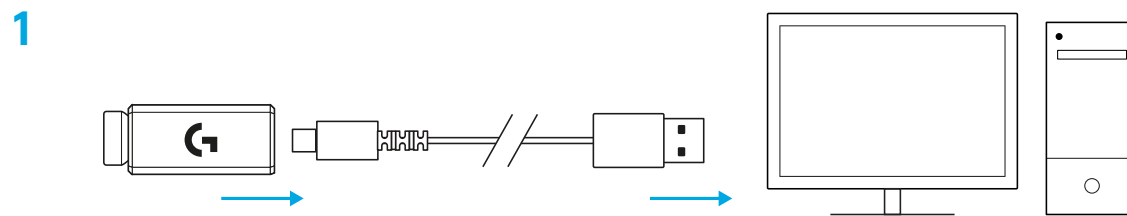
# RECURSOS DO MOUSE

- 1 LED de energia
- 2 Clique esquerdo
- 3 Clique direito
- 4 Clique do meio/rolagem
- 5 Navegar para frente
- 6 Navegar para trás
- 7 Ciclo DPI
- 8 Porta USB de dados/carregamento
- 9 Ligado/desligado
- 10 Porta do armazenamento do receptor

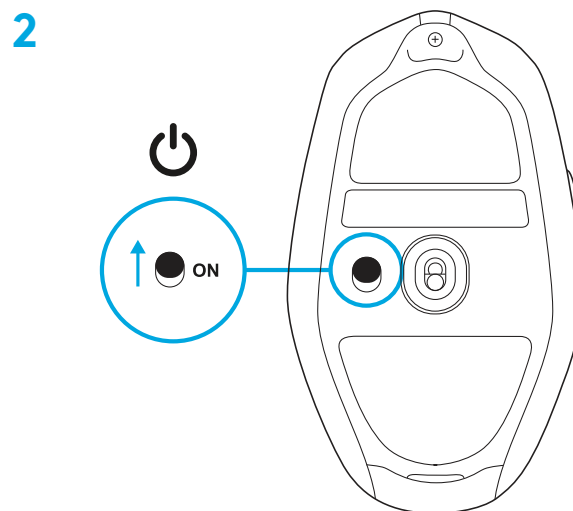


# CONFIGURAÇÃO

- 1 Conecte o cabo de dados/carregamento no computador e, em seguida, conecte o adaptador de extensão e o receptor ao cabo de dados/carregamento

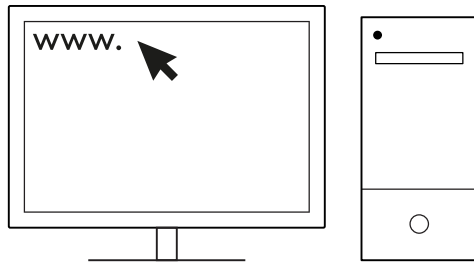


- 2 Ativar mouse

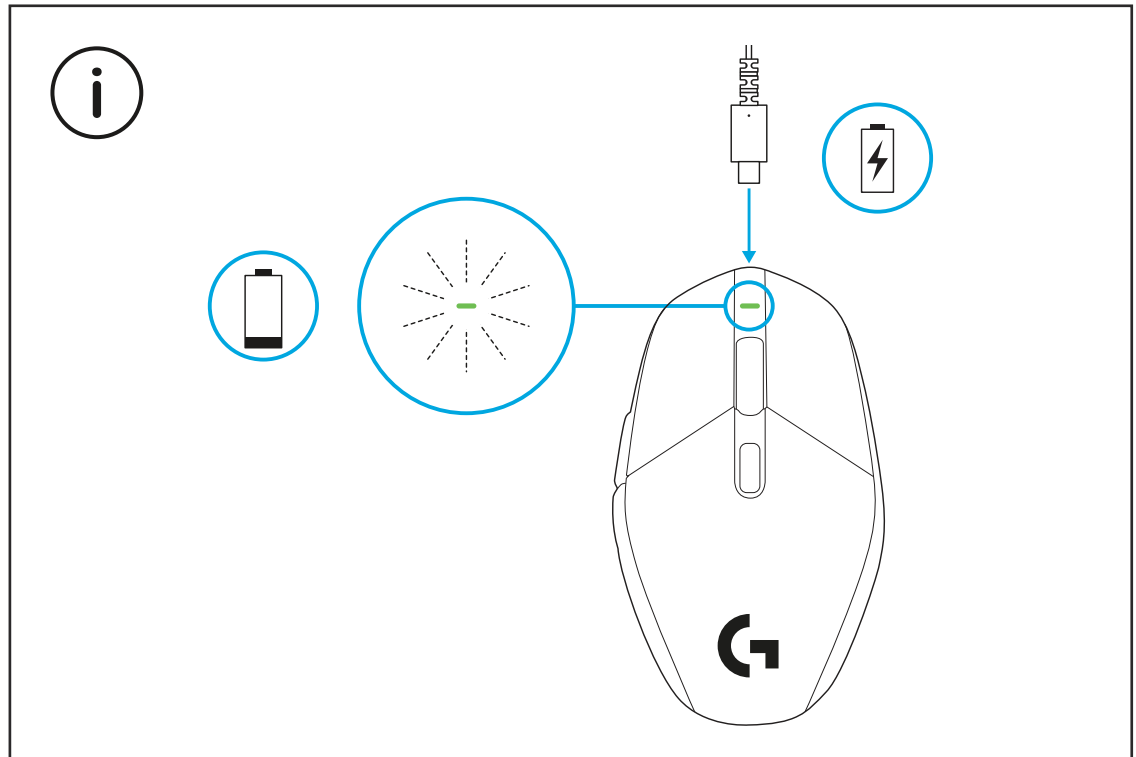


3 Para configurar as configurações de mouse, como DPI, faça download do G HUB software em [logitechG.com/GHUB](http://logitechG.com/GHUB)

3

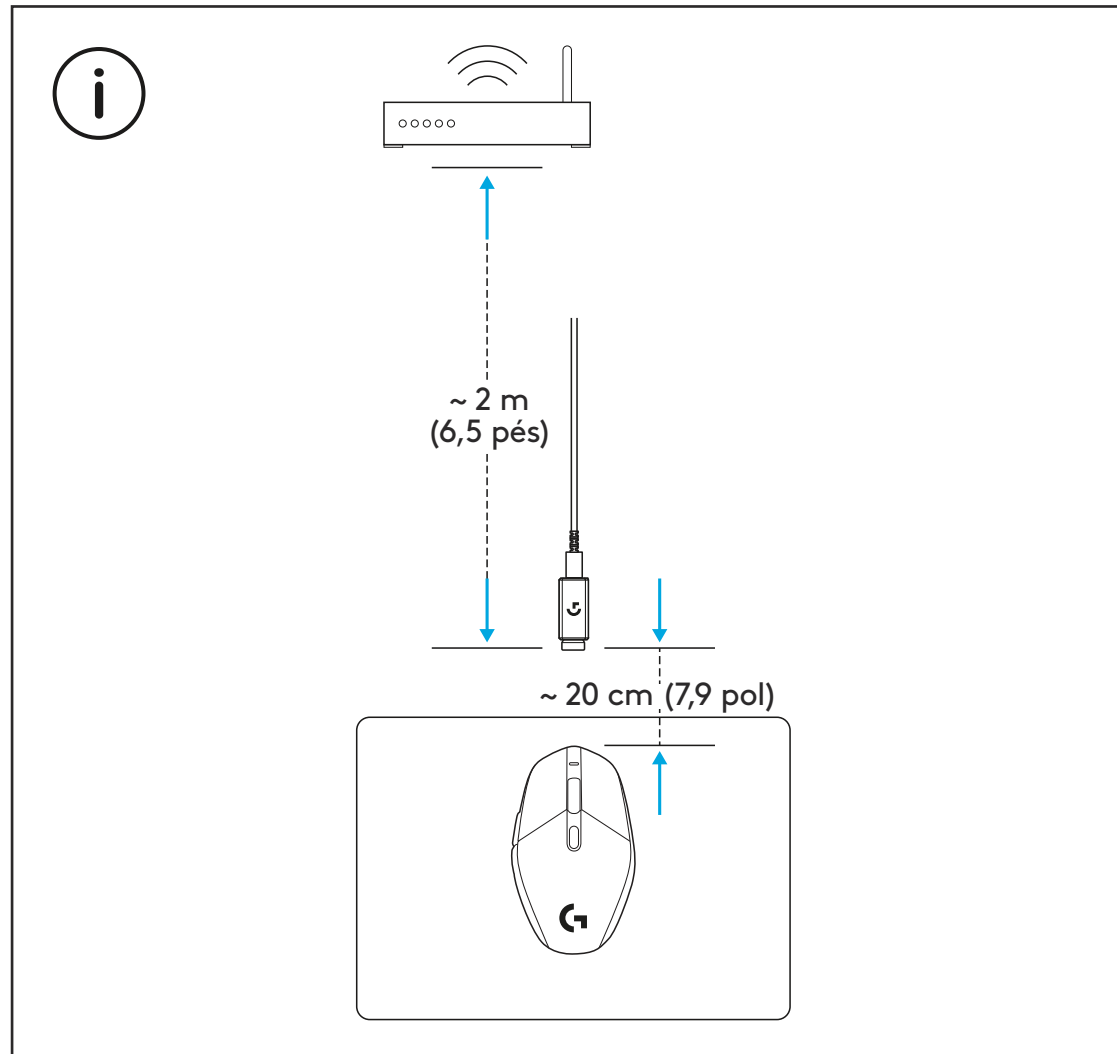


[logitechG.com/ghub](http://logitechG.com/ghub)

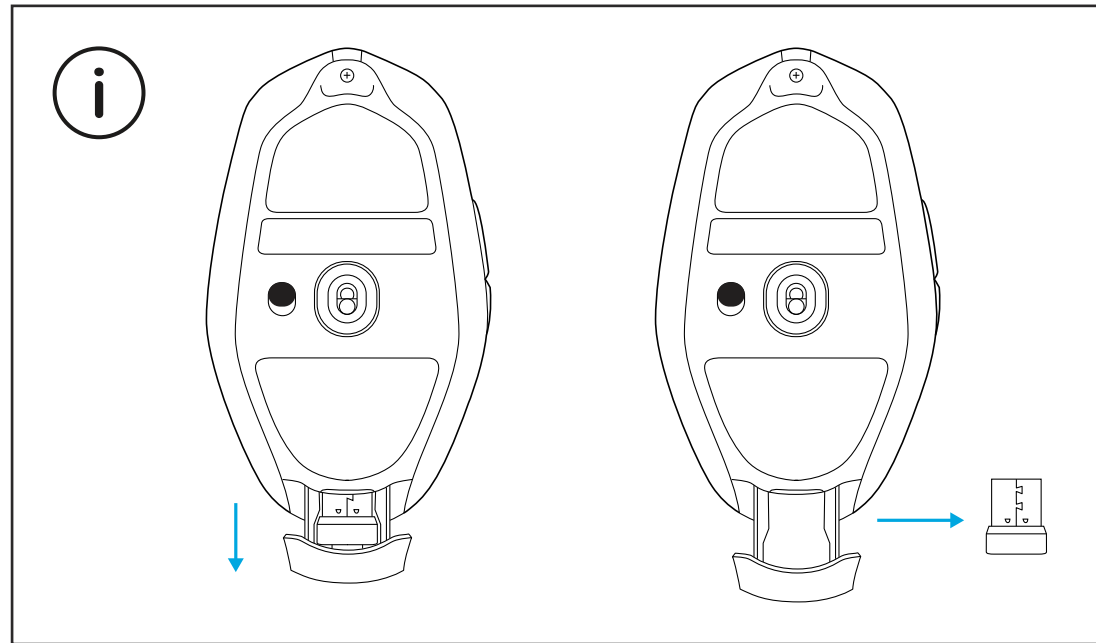




Para obter um ótimo desempenho sem fio, use o mouse a menos de 20 cm do receptor e mais do que 2 m das fontes de interferência de 2,4 GHz (como roteadores de Wi-Fi).



O receptor USB pode ser armazenado dentro do mouse abrindo a porta do armazenamento. Isso pode evitar a perda do receptor.





©2021 Logitech. Logitech, Logitech G, Logi and their respective logos are trademarks or registered trademarks of Logitech Europe S.A. and/or its affiliates in the U.S. and other countries. All other trademarks are the property of their respective owners. Logitech assumes no responsibility for any errors that may appear in this manual. Information contained herein is subject to change without notice.

©2021 Logitech. Logitech, Logitech G, Logi et leurs logos respectifs sont des marques commerciales ou déposées de Logitech Europe S.A. et/ou de ses sociétés affiliées aux États-Unis et dans d'autres pays. Toutes les autres marques sont la propriété exclusive de leurs détenteurs respectifs. Logitech décline toute responsabilité en cas d'erreurs susceptibles de s'être glissées dans le présent manuel. Les informations énoncées dans ce document peuvent faire l'objet de modifications sans préavis.

WEB-621-001854 002