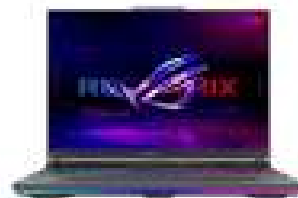


ASUS ROG Strix G16 G614JIR-N4050W-BE Intel® Core™ i9 i9-14900HX Laptop 40.6 cm (16") WQXGA 16 GB DDR5-SDRAM 1 TB SSD NVIDIA GeForce RTX 4070 Wi-Fi 6E (802.11ax) Windows 11 Home Black, Grey



Brand : ASUS

Product family: ROG

Product code: 90NR0IG5-M002J0

Product name : G614JIR-N4050W-BE

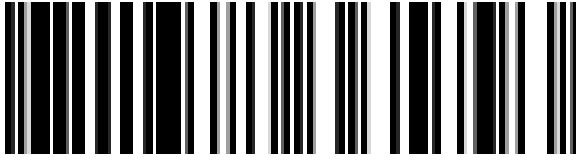
- Windows 11 Home 64-bit
 - Intel Core i9-14900HX (36MB Cache, 2.2GHz)
 - 40.6 cm (16") WQXGA 2560 x 1600 IPS, NVIDIA GeForce RTX 4070 (8GB GDDR6)
 - 16GB (5600MHz) DDR5-SDRAM & 1000GB SSD
- Intel Core i9-14900HX (36MB Cache, 2.2GHz), 16GB DDR5-SDRAM, 1000GB SSD, 40.6 cm (16") WQXGA 2560 x 1600 IPS, Intel UHD Graphics, NVIDIA GeForce RTX 4070 (8GB GDDR6), LAN, WLAN, Webcam, Windows 11 Home 64-bit

ASUS ROG Strix G16 G614JIR-N4050W-BE Intel® Core™ i9 i9-14900HX Laptop 40.6 cm (16") WQXGA 16 GB DDR5-SDRAM 1 TB SSD NVIDIA GeForce RTX 4070 Wi-Fi 6E (802.11ax) Windows 11 Home Black, Grey:

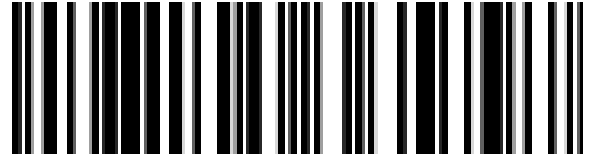
Game with confidence thanks to Windows 11 Pro and the raw horsepower of the 2024 Strix G16. Powered by an Intel® Core™ i9 Processor 14900HX and up to an NVIDIA GeForce RTX 4080 Laptop GPU boasting a max TGP of 175W with Dynamic Boost, be ready to dominate the competition in all of the latest games. Backed up with a dedicated MUX Switch and NVIDIA Advanced Optimus, the Strix G16 unlocks the true potential of its hardware. With PCIe Gen4x4 SSD storage and up to 32GB of 5600MHz DDR5 RAM, large game libraries and intense multitasking sessions are a breeze for this gaming machine.

Design		Camera	
Colour name	Eclipse Gray	Front camera HD type	HD
Product type *	Laptop	Network	
Product colour *	Black, Grey	Top Wi-Fi standard *	Wi-Fi 6E (802.11ax)
Form factor *	Clamshell	Wi-Fi standards	Wi-Fi 6E (802.11ax)
Market positioning	Gaming	Mobile network connection *	✗
Display		Antenna type	2x2
Display diagonal *	40.6 cm (16")	Ethernet LAN	✓
Display resolution *	2560 x 1600 pixels	Ethernet LAN data rates	10,100,1000 Mbit/s
Touchscreen *	✗	Bluetooth	✓
HD type	WQXGA	Bluetooth version	5.3
Panel type	IPS	Ports & interfaces	
Native aspect ratio	16:10	USB 3.2 Gen 2 (3.1 Gen 2) Type-A ports quantity	2
Anti-glare screen	✓	USB 3.2 Gen 2 (3.1 Gen 2) Type-C ports quantity	1
Display brightness	500 cd/m ²	Ethernet LAN (RJ-45) ports	1
RGB colour space	DCI-P3	HDMI ports quantity *	1
Colour gamut	100%	HDMI version	2.1
Display response rise/fall	3 ms	Thunderbolt 4 ports quantity	1
Maximum refresh rate	240 Hz	Intel® Thunderbolt 4	✓
Contrast ratio (typical)	1200:1	Combo headphone/mic port	✓
High Dynamic Range (HDR) supported	✓	Charging port type	DC-in jack
High Dynamic Range (HDR) technology	Dolby Vision	Power adapter barrel connector	6.0 mm
Processor		USB Type-C DisplayPort Alternate Mode	✓
Processor manufacturer *	Intel	USB Power Delivery	✓
Processor family *	Intel® Core™ i9	Performance	
Processor generation	Intel® Core™ i9 (14th gen)	Motherboard chipset	Intel HM770 Express
Processor model *	i9-14900HX		
Processor cores	24		
Processor boost frequency	5.8 GHz		

Processor		Keyboard	
Processor frequency *	2.2 GHz	Pointing device	Touchpad
Processor cache	36 MB	Keyboard layout	AZERTY
Processor cache type	Smart Cache	Keyboard language	Belgian
Memory		Numeric keypad *	✗
Internal memory *	16 GB	Keyboard backlit	✓
Internal memory type	DDR5-SDRAM	Keyboard backlit colour	RGB
Memory clock speed	5600 MHz	Keyboard backlit zone	4-zone RGB
Memory form factor	SO-DIMM	Software	
Memory slots	2x SO-DIMM	Operating system architecture	64-bit
Maximum internal memory *	32 GB	Trial software	1-month trial for new Microsoft 365 customers. Credit card required.
Memory channels	Dual-channel	Operating system installed *	Windows 11 Home
Storage		Xbox Game Pass Ultimate_3 months (*Terms and exclusions apply. Offer only available in eligible markets for Xbox Game Pass Ultimate. Eligible markets are determined at activation. Game catalog varies by region, device, and time.)	
Total storage capacity *	1 TB	Bundled software	
Storage media *	SSD	Battery	
Total SSDs capacity	1 TB	Battery technology	Lithium-Ion (Li-Ion)
Number of SSDs installed	1	Number of battery cells	4
SSD capacity	1 TB	Battery capacity *	90 Wh
SSD interface	PCI Express 4.0	Fast charging	✓
NVMe	✓	Fast charging time (50%)	30 min
SSD form factor	M.2	Power	
Optical drive type *	✗	AC adapter power	280 W
Card reader integrated	✗	AC adapter frequency	50 - 60 Hz
Graphics		AC adapter input voltage	100 - 240 V
Discrete GPU manufacturer	NVIDIA	AC adapter output current	14 A
Discrete graphics card model *	NVIDIA GeForce RTX 4070	AC adapter output voltage	20 V
Discrete graphics card memory	8 GB	Security	
Discrete graphics memory type	GDDR6	Trusted Platform Module (TPM)	✓
On-board graphics card *	✓	Password protection	✓
Discrete graphics card *	✓	Password protection type	BIOS, User
On-board graphics card family	Intel® UHD Graphics	Sustainability	
On-board graphics card model *	Intel® UHD Graphics	Sustainability compliance	✓
NVIDIA G-SYNC	✓	Sustainability certificates	ENERGY STAR
Audio		Weight & dimensions	
Audio system	Smart Amp	Width	354 mm
Number of built-in speakers	2	Depth	264 mm
Built-in microphone	✓	Height (front)	2.26 cm
Camera		Height (rear)	3.04 cm
Front camera	✓	Weight *	2.5 kg
Front camera resolution	1280 x 720 pixels		



4711387365793



0197105365797



197105365797

Disclaimer. The information published here (the "Information") is based on sources that can be considered reliable, typically the manufacturer, but this Information is provided "AS IS" and without guarantee of correctness or completeness. The Information is only indicative and can be changed at any time without notification. No rights can be based on the Information. Suppliers or aggregators of this Information do not accept any liability with regard to the content of (web)pages and other documents, including its Information. The publisher of the Information can not be held liable for the content of 3rd party websites that are linking this Information or are linked to from this Information. You as the User of the Information are solely responsible for the choice and usage of this Information. You are not entitled to transfer, copy or otherwise multiply or distribute the Information. You are obliged to follow the directions of the copyright owner(s) with regard to the use of the Information. Exclusively Dutch law is applicable. With regard to price and stock data on the site, the publisher followed a number of starting points, which are not necessarily relevant for your private or business circumstances. Therefore, the price and stock data are only indicative and are subject to changes. You are personally responsible for the way you use and apply this information. As a user of the Information or sites or documents in which this Information is included, you will adhere to standard fair use including avoidance of spamming, ripping, intellectual-property violations, privacy violations, and any other illegal activity.