

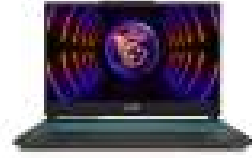


**MSI Cyborg 15 A12VE-698BE Intel® Core™ i5 i5-12450H Laptop  
39.6 cm (15.6") Full HD 16 GB DDR5-SDRAM 512 GB SSD NVIDIA  
GeForce RTX 4050 Wi-Fi 6 (802.11ax) Windows 11 Home Black**

**Brand :** MSI

**Product family:** Cyborg

**Product code:** CYBORG 15  
A12VE-698BE



**Product name :** Cyborg 15  
A12VE-698BE

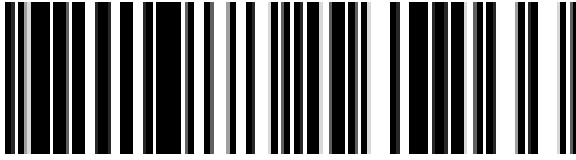
- Windows 11 Home
  - Intel Core i5-12450H (12MB Cache)
  - 39.6 cm (15.6") Full HD 1920 x 1080, NVIDIA GeForce RTX 4050 (6GB GDDR6)
  - 16GB (5600MHz) DDR5-SDRAM (2 x 8) & 512GB SSD
- Intel Core i5-12450H (12MB Cache), 16GB DDR5-SDRAM, 512GB SSD, 39.6 cm (15.6") Full HD 1920 x 1080, Intel UHD Graphics, NVIDIA GeForce RTX 4050 (6GB GDDR6), LAN, WLAN, Webcam, Windows 11 Home

MSI Cyborg 15 A12VE-698BE. Product type: Laptop, Form factor: Clamshell. Processor family: Intel® Core™ i5, Processor model: i5-12450H. Display diagonal: 39.6 cm (15.6"), HD type: Full HD, Display resolution: 1920 x 1080 pixels. Internal memory: 16 GB, Internal memory type: DDR5-SDRAM. Total storage capacity: 512 GB, Storage media: SSD. On-board graphics card model: Intel® UHD Graphics, Discrete graphics card model: NVIDIA GeForce RTX 4050. Operating system installed: Windows 11 Home. Product colour: Black



| Design                               |                          | Graphics  |                     |
|--------------------------------------|--------------------------|---|---------------------|
| Colour name                          | Translucent Black        | On-board graphics card 4K support                 | ✓                   |
| Product type *                       | Laptop                   | Graphics card Open GL support                     | ✓                   |
| Product colour *                     | Black                    | <b>Audio</b>                                      |                     |
| Form factor *                        | Clamshell                | Audio system                                      | Nahimic 3           |
| Market positioning                   | Gaming                   | Number of built-in speakers                       | 2                   |
| <b>Display</b>                       |                          | Speakers manufacturer                             | Nahimic             |
| Display diagonal *                   | 39.6 cm (15.6")          | Speaker power                                     | 2 W                 |
| Display resolution *                 | 1920 x 1080 pixels       | Built-in microphone                               | ✓                   |
| Touchscreen *                        | ✗                        | <b>Camera</b>                                     |                     |
| HD type                              | Full HD                  | Front camera                                      | ✓                   |
| LED backlight                        | ✓                        | Front camera HD type                              | HD                  |
| Native aspect ratio                  | 16:9                     | Video capturing speed                             | 30 fps              |
| Display brightness                   | 250 cd/m <sup>2</sup>    | <b>Network</b>                                    |                     |
| Maximum refresh rate                 | 144 Hz                   | Top Wi-Fi standard *                              | Wi-Fi 6 (802.11ax)  |
| <b>Processor</b>                     |                          | Wi-Fi standards                                   | Wi-Fi 6 (802.11ax)  |
| Processor manufacturer *             | Intel                    | Mobile network connection *                       | ✗                   |
| Processor family *                   | Intel® Core™ i5          | WLAN controller model                             | Intel Wi-Fi 6 AX201 |
| Processor generation                 | 12th gen Intel® Core™ i5 | WLAN controller manufacturer                      | Intel               |
| Processor model *                    | i5-12450H                | Ethernet LAN                                      | ✓                   |
| Processor cores                      | 8                        | Ethernet LAN data rates                           | 10,100,1000 Mbit/s  |
| Processor boost frequency            | 4.4 GHz                  | Bluetooth   | ✓                   |
| Performance cores                    | 4                        | Bluetooth version                                 | 5.2                 |
| Efficient cores                      | 4                        | <b>Ports &amp; interfaces</b>                     |                     |
| Performance-core Max Turbo Frequency | 4.4 GHz                  | USB 3.2 Gen 1 (3.1 Gen 1) Type-A ports quantity * | 2                   |
| Efficient-core Max Turbo Frequency   | 3.3 GHz                  | USB 3.2 Gen 1 (3.1 Gen 1) Type-C ports quantity * | 1                   |
| Efficient-core boost frequency       | 3.5 GHz                  | Ethernet LAN (RJ-45) ports                        | 1                   |
| Processor cache                      | 12 MB                    |   |                     |

|                                |                         |   |                 |
|--------------------------------|-------------------------|---|-----------------|
| <b>Processor</b>               |                         | <b>Ports &amp; interfaces</b>   |                 |
| Processor cache type           | Smart Cache             | HDMI ports quantity *   | 1               |
| Processor base power           | 45 W                    | Combo headphone/mic port  | ✓               |
| Maximum turbo power            | 95 W                    | Charging port type  | DC-in jack      |
| <b>Memory</b>                  |                         | USB Type-C DisplayPort Alternate Mode   | ✓               |
| Internal memory *              | 16 GB                   | <b>Performance</b>  |                 |
| Internal memory type           | DDR5-SDRAM              | Motherboard chipset   | Intel HM670     |
| Memory clock speed             | 5600 MHz                | <b>Keyboard</b>   |                 |
| Memory form factor             | SO-DIMM                 | Pointing device   | Touchpad        |
| Memory layout (slots x size)   | 2 x 8 GB                | Numeric keypad *  | ✓               |
| Memory slots                   | 2x SO-DIMM              | Keyboard backlit  | ✓               |
| Maximum internal memory *      | 64 GB                   | Keyboard backlit colour   | Blue            |
| <b>Storage</b>                 |                         | Island-style keyboard   | ✓               |
| Total storage capacity *       | 512 GB                  | <b>Software</b>   |                 |
| Storage media *                | SSD                     | Operating system installed *  | Windows 11 Home |
| Total SSDs capacity            | 512 GB                  | MSI System Control Manager MSI BurnRecovery MSI Remind Manager MSI Battery Calibration MSI Help Desk Norton Internet Security (trial 60days) Norton Studio (Metro) (permanent free) Nvidia GeForce Experience Microsoft Office 2016 (trial 30 days, 1 year per purchase) True Color 2.0 Nahimic 3 Dragon Center 2.0 |                 |
| Number of SSDs installed       | 1                       | Bundled software  |                 |
| SSD capacity                   | 512 GB                  |   |                 |
| SSD interface                  | PCI Express 4.0         |   |                 |
| NVMe                           | ✓                       |   |                 |
| Optical drive type *           | ✗                       |   |                 |
| <b>Graphics</b>                |                         |   |                 |
| Discrete GPU manufacturer      | NVIDIA                  |   |                 |
| Discrete graphics card model * | NVIDIA GeForce RTX 4050 |   |                 |
| Discrete graphics card memory  | 6 GB                    |   |                 |
| Discrete graphics memory type  | GDDR6                   |   |                 |
| On-board graphics card *       | ✓                       |   |                 |
| On-board GPU manufacturer      | Intel                   |   |                 |
| Discrete graphics card *       | ✓                       |   |                 |
| On-board graphics card family  | Intel® UHD Graphics     |   |                 |
| On-board graphics card model * | Intel® UHD Graphics     |   |                 |
|                                |                         | <b>Battery</b>  |                 |
|                                |                         | Number of battery cells   | 3               |
|                                |                         | Battery capacity *  | 53.5 Wh         |
|                                |                         | <b>Power</b>  |                 |
|                                |                         | AC adapter power  | 120 W           |
|                                |                         | <b>Security</b>   |                 |
|                                |                         | Cable lock slot   | ✓               |
|                                |                         | Cable lock slot type  | Kensington      |
|                                |                         | <b>Weight &amp; dimensions</b>  |                 |
|                                |                         | Width   | 359 mm          |
|                                |                         | Depth   | 250 mm          |
|                                |                         | Height  | 22.9 mm         |
|                                |                         | Weight *  | 1.98 kg         |



4711377165266

Disclaimer. The information published here (the "Information") is based on sources that can be considered reliable, typically the manufacturer, but this Information is provided "AS IS" and without guarantee of correctness or completeness. The Information is only indicative and can be changed at any time without notification. No rights can be based on the Information. Suppliers or aggregators of this Information do not accept any liability with regard to the content of (web)pages and other documents, including its Information. The publisher of the Information can not be held liable for the content of 3rd party websites that are linking this Information or are linked to from this Information. You as the User of the Information are solely responsible for the choice and usage of this Information. You are not entitled to transfer, copy or otherwise multiply or distribute the Information. You are obliged to follow the directions of the copyright owner(s) with regard to the use of the Information. Exclusively Dutch law is applicable. With regard to price and stock data on the site, the publisher followed a number of starting points, which are not necessarily relevant for your private or business circumstances. Therefore, the price and stock data are only indicative and are subject to changes. You are personally responsible for the way you use and apply this information. As a user of the Information or sites or documents in which this Information is included, you will adhere to standard fair use including avoidance of spamming, ripping, intellectual-property violations, privacy violations, and any other illegal activity.

Publication date: 19-OCT-2024. Prints or copies of Information are only valid on the printed Publication date