

P20C ARGB

Mid-Tower E-ATX Gaming Case
Outstanding Performance Performance



MIDTOWER METAL WITH FRONT PANEL

SIMPLE ASSEMBLY & SUPERIOR COOLING

Antec Performance Series P20C ARGB adopts a unique metal design, providing a reserved air flow path. With the full-size dust filter, the P20C ARGB can reach the case for perfect cooling and dust prevention. The pat-type metal front panel is effortlessly removable, and the clip-on dust filter makes cleaning easy. The well-designed styling will give you a refreshable PC, whenever.

- Full-Size Clip-On Dust Filter at the Front
- Integrated Dust Filter at the Top
- Full-Size Dust Filter at the Bottom



FAN-INSTALLED FANS

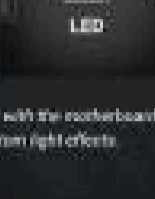
3 X 120MM ARGB FANS INCLUDED

The included ARGB fans at the front provide maximum airflow, and the PWM function can easily reach the balance between cooling and lighting.



BUILD-IN LED & PWM FAN CONTROLLER

Press the LED mode button to control all the addressable LEDs.



Or sync it with the motherboard to enjoy more custom light effects.



REAR-PORTS FUNCTION

TYPE-C 3.2 GEN 2 READY

Each of Type-C 3.2 Gen 2 port provides transfer speeds up to 10 Gbps.

- Power
- LED
- AP-ALERT
- MIC
- USB 3.2-C
- Type-C 3.2 Gen 2



FOR MOTHERBOARD EXPANSION

HIGH FLEXIBILITY FOR EXPANSION

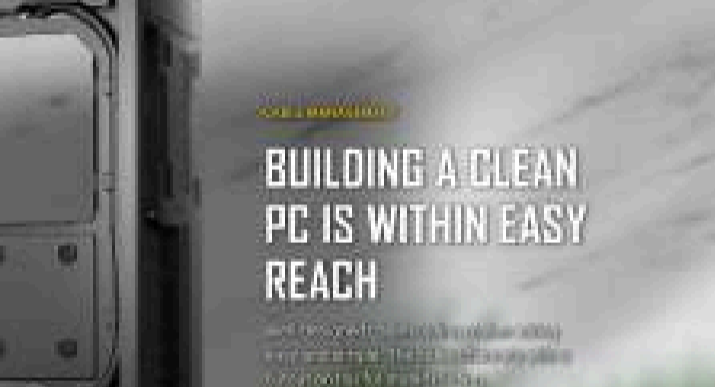
Features an extensive interior and powerful compatibility. Supports 2x 350mm radiators at the front and top simultaneously.



FOR GPU INSTALLATION

SUPPORTS VERTICAL GPU INSTALLATION

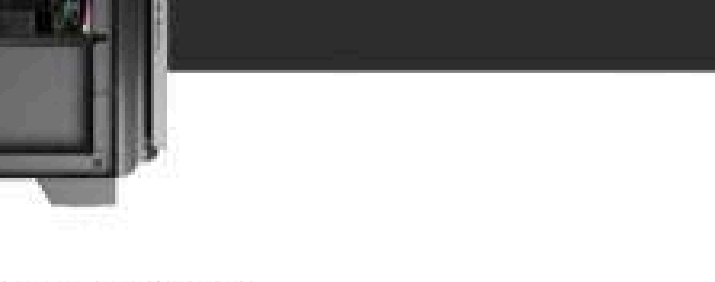
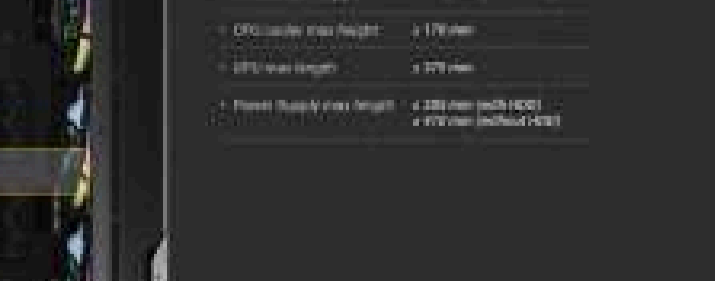
Ready to provide users with a more flexible choice through the 7 reusable PCI-C slots for vertical GPU installation.



FOR CLEAN BUILDING

BUILDING A CLEAN PC IS WITHIN EASY REACH

With thoughtful design and thoughtful details, you can build a clean PC with ease.

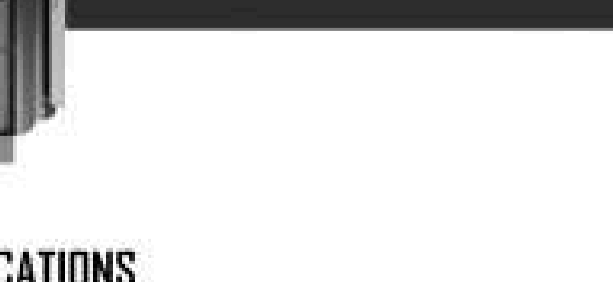
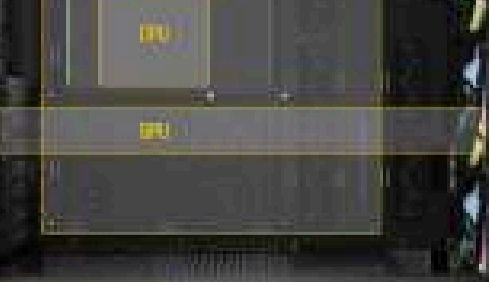
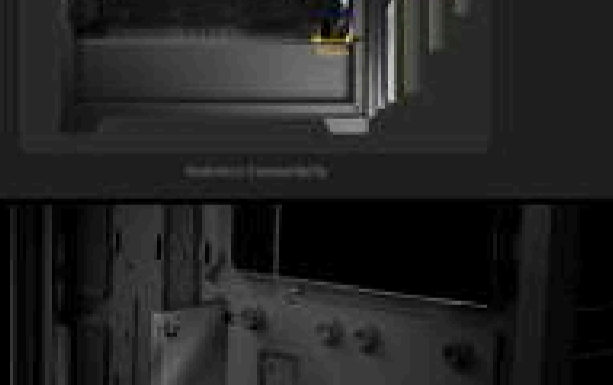


FOR CLEAN BUILDING

9 FANS SIMULTANEOUSLY

It's 120mm fans and a 360mm radiator can be installed inside the interior at the front. Plus 3x 120mm fans outside for maximum air outflow, cooling.

Supports up to 3x 120mm fans & 360mm radiators at the front and top simultaneously.



FOR MOTHERBOARD EXPANSION

UNLIMITED UPGRADES

- Motherboard Support: E-ATX, ATX, Micro-ATX, ITX
- CPU Cooler Max Height: < 170mm
- CPU Max Length: < 275mm
- Power Supply Max Height: < 200mm (with 180mm < 170mm without PCI-E)

SPECIFICATIONS

Main Specs	
Max. Front Panel Support	E-ATX up to 330mm, ATX, Micro-ATX, ITX
Form Factor	Mid-Tower
Case Material	Steel, Plastic
Side Window Material	Anti-Static Tempered Glass
I/O Ports	Power, LED, USB 3.0 x 2, TYPE-C 3.2 Gen 2 x 1, MIC, HD-AUXIO

Expansion Slots	
Standard	7 (Full Height Expansion Slot)
Vertical	0

Compatibility & Clearance	
CPU Cooler Max Height	< 170mm
CPU Max Length	< 275mm
Power Supply Max. Length	< 200mm (with 180mm) / < 170mm (without 180mm)
Cable Routing Space	< 20mm

Dimensions	
Case Dimensions (Depth x H x W)	445mm x 210mm x 480mm
Net Weight	8.1kg
Gross Weight	9.32kg

Fan Support	
Front	120mm x 3 / 140mm x 3 / 160mm x 2
Top	120mm x 3 / 140mm x 2
Side	120mm x 1
Power Supply Chassis	120mm x 2

Accessories	
Included Fans	3x 120mm ARGB Fans in front
Full & HDD Cover (incl)	Yes
CPU Holder	No
Cable Routing (Elements)	Yes, 4 pins
Cable Ties	Yes, 3 pcs
Cable Ties (Items)	Yes, 3 pcs
Drive Bays (Items)	Yes, 360mm (2x), 5.25" (1x), 3.5" (1x)

Radiator Support	
Front	Up to 360mm
Top	Up to 360mm
Side	Up to 150mm

General	
Warranty	3 years
UPC#	0-761345-81181-3