

xtrfy

GP4 PREMIUM CLOTH GAMING MOUSEPAD



A close-up, low-angle shot of a person's foot wearing a grey sneaker splattered with colorful paint. The shoe is the central focus, with the background showing an art studio with various canvases and equipment. The lighting is soft and natural, highlighting the texture of the shoe and the vibrant colors of the paint splatters.

GP4 MOUSEPAD SERIES. FIVE PIECES OF ART.

One goal: the best mousepad ever made. With the most expressful designs you've ever seen. Welcome to the fourth generation of Xtrfy gaming surfaces.

MISSION: THE PERFECT SURFACE.

Looking for effortless glide or flawless mouse control? This mousepad is designed to give you both. Shaped by years of experience in professional-grade mousepads, the GP4 introduces a cloth surface with the perfect balance between speed and control.

"The GP4 is our most ambitious mousepad ever, in terms of both aesthetics and performance. After years of making mousepads with some of the world's top players and going through countless amounts of materials, we've found the sweet spot in the trade-off between control and speed."

ERIK JENSEN, CTO

PAINTED BY KIM BERKHUIZEN.

In a series of oil paintings, Swedish artist Kim Berkhuisen has turned the different colorways of Xtrfy's Project 4 into abstract art.

"By interpreting the colors found on the different editions of the Xtrfy M4 mouse, I wanted to make the standard black mousepad more expressful and bring some more color to your desk."

KIM BERKHUIZEN, ARTIST



STREET BLUE AND STREET PINK.

The Street Blue and Street Pink editions are based on Xtrfy's Miami Blue and Pink colorways, and inspired by city life and colorful graffiti.

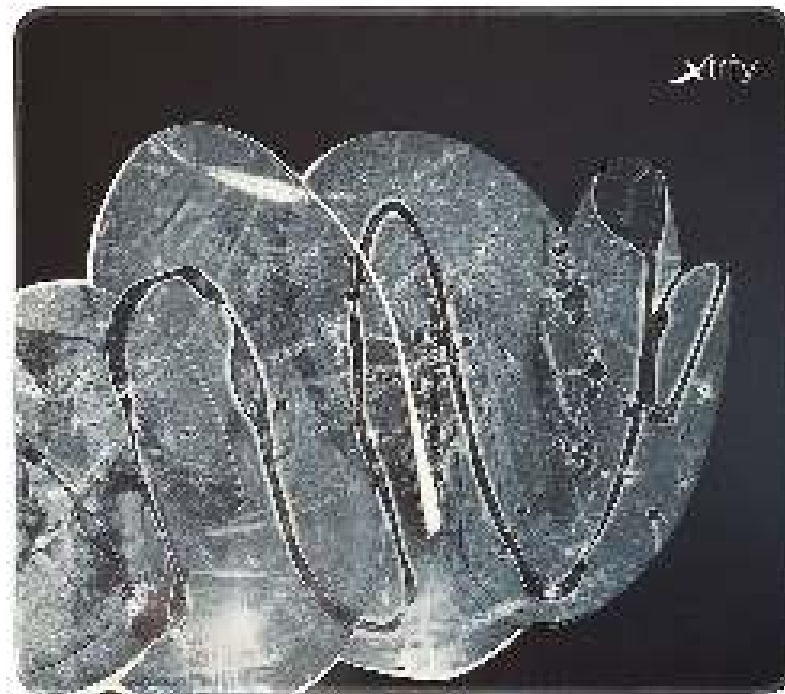






CLOUD WHITE.

Have you ever looked up at the sky and imagined different figures in the clouds? The Cloud White edition is inspired by those moments, and based on the white colorway of Xtrfy's products.





ABSTRACT RETRO.

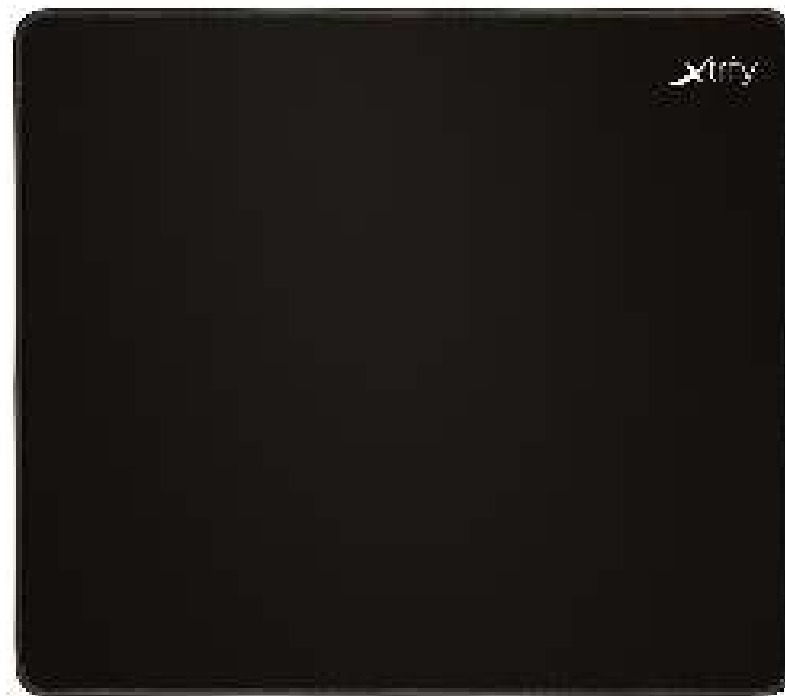
The Abstract Retro edition is based on Xtrfy's Retro colorway, inspired by the early days of gaming and the classic consoles that sparked our love for video games.





ORIGINAL BLACK.

If you prefer a clean black mousepad, the GP4 is also available in its original version.





DURABLE DESIGN.

The GP4 is made out of hard-wearing materials and has stitched edges for increased durability. It's even machine washable. 30 °C, no tumbling, no ironing – and your pad will look as good as new.



WINNING INGREDIENTS:

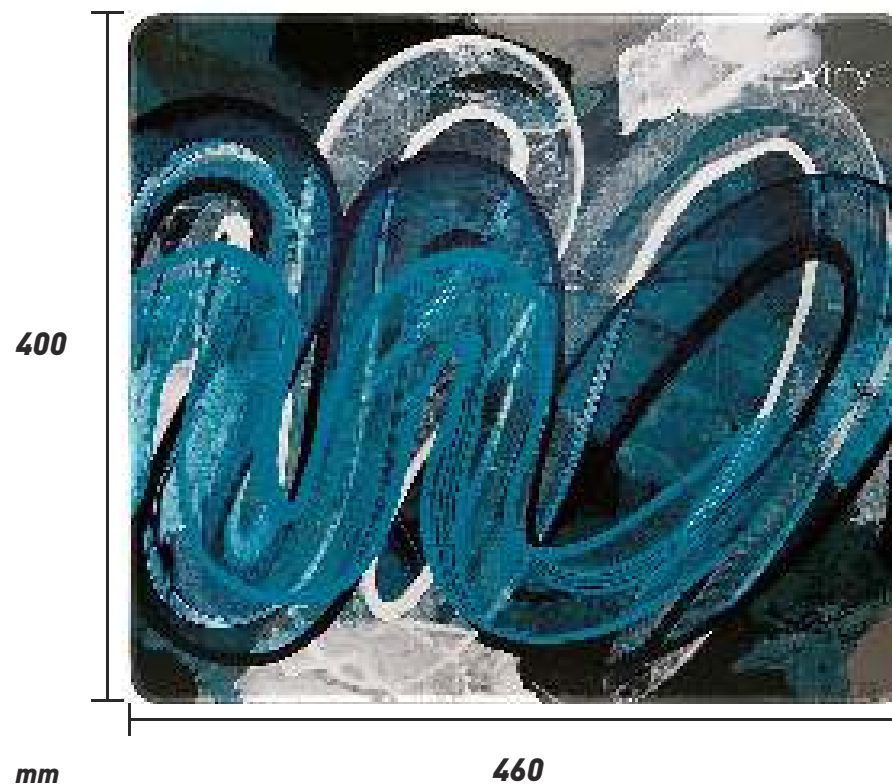
Surface: Cloth

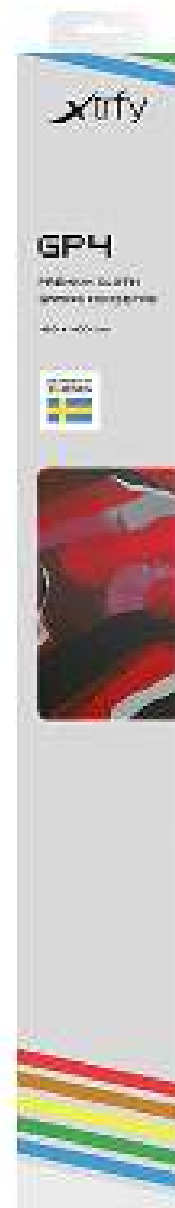
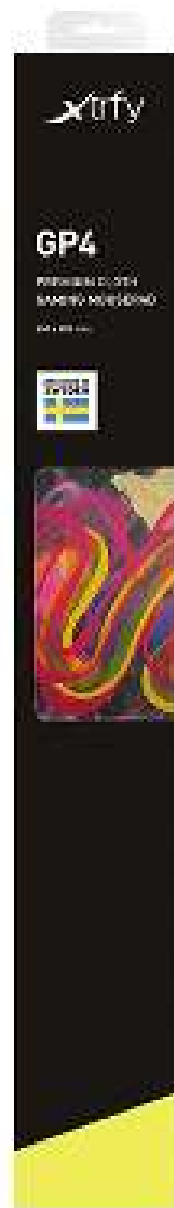
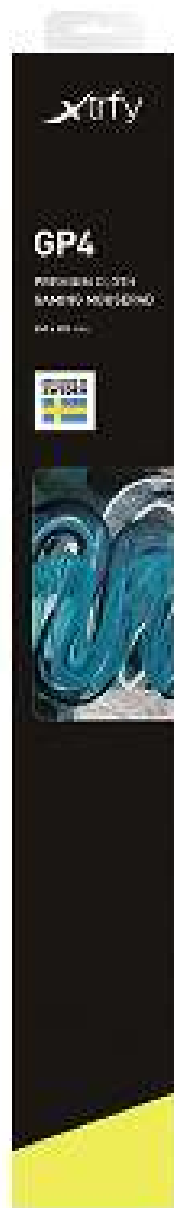
Base: Non-slip rubber

Edges: Stitched for increased durability

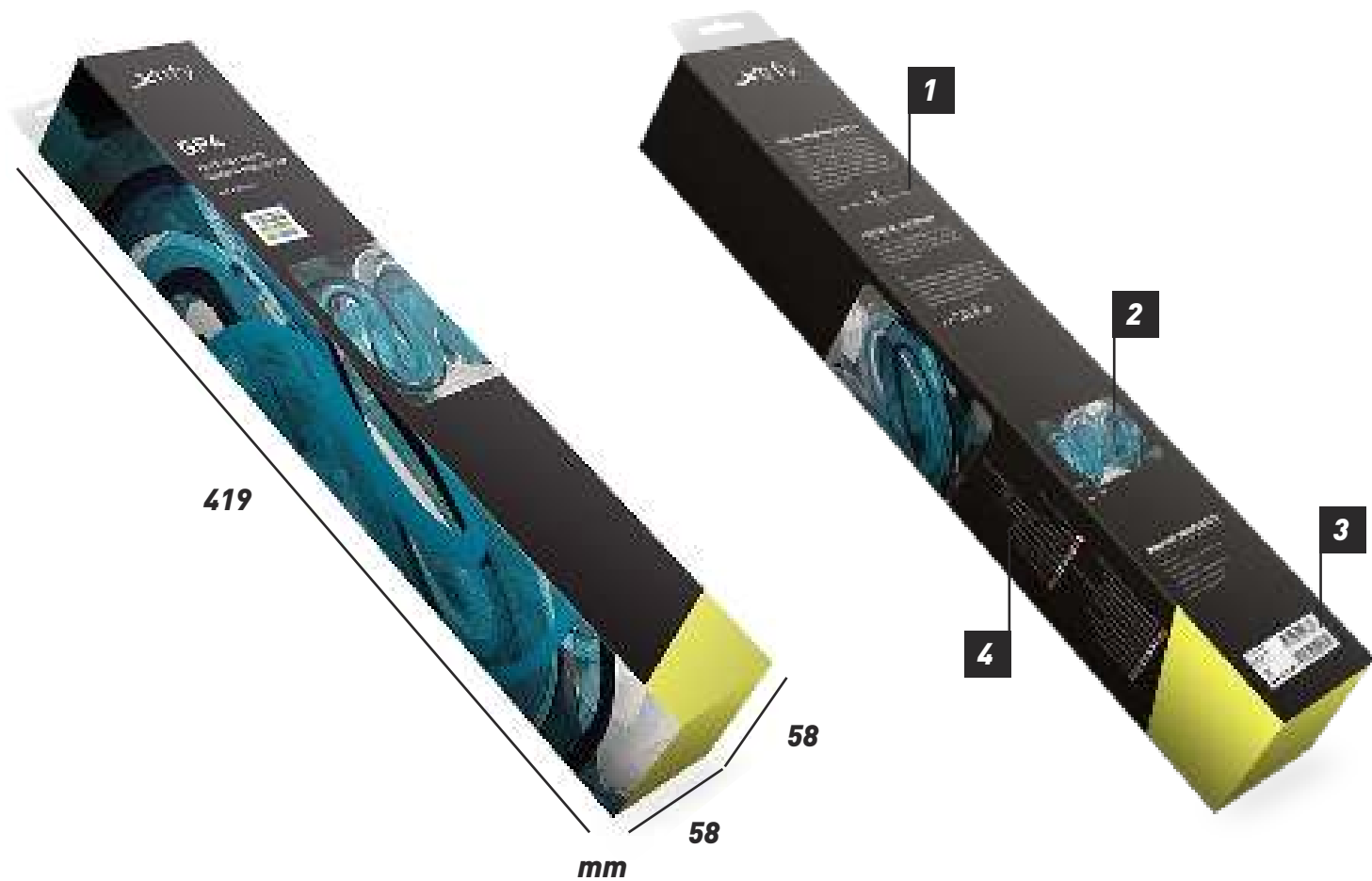
Size: Large (460 x 400 x 4 mm)

Other: Machine washable at 30 °C

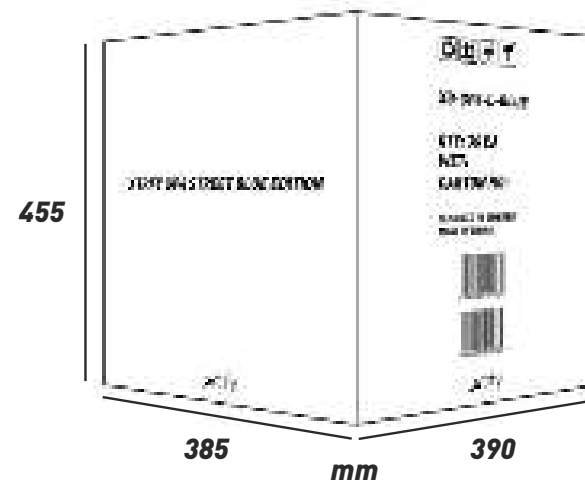








- 1** Product description and surface speed meter
- 2** Product preview
- 3** EAN/UPC barcodes and certification marks
- 4** Product translations



PACKAGING

	SINGLE	INNERBOX	MASTERBOX
PCS	1	6	36
WEIGHT	0.37 kg	2.44 kg	15.13 kg
DIMENSIONS (W/H/D)	410 x 58 x 58 mm	192 x 130 x 425 mm	390 x 385 x 455 mm

PRODUCT

	ART. NO	EAN	UPC
GP4 BLACK	XG-GP4-L-BLACK	7340086909334	842597101100
GP4 CLOUD WHITE	XG-GP4-L-WHITE	7340086909341	842597101117
GP4 ABSTRACT RETRO	XG-GP4-L-RETRO	7340086909358	842597101124
GP4 STREET BLUE	XG-GP4-L-BLUE	7340086909365	842597101131
GP4 STREET PINK	XG-GP4-L-PINK	7340086909372	842597101148

QUESTIONS?

GET IN TOUCH WITH JOAKIM JANSSON AT JOAKIM.JANSSON@XTRFY.COM
OR JOHAN WÄLTARE: JOHAN.WALTARE@XTRFY.COM